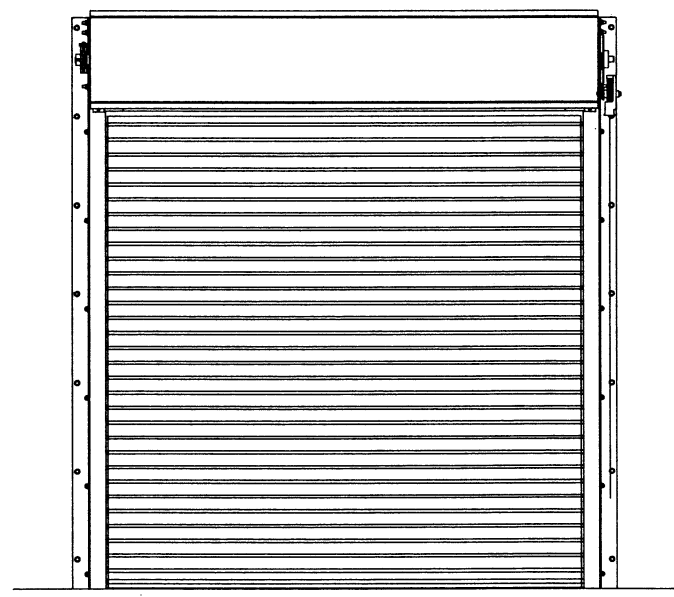
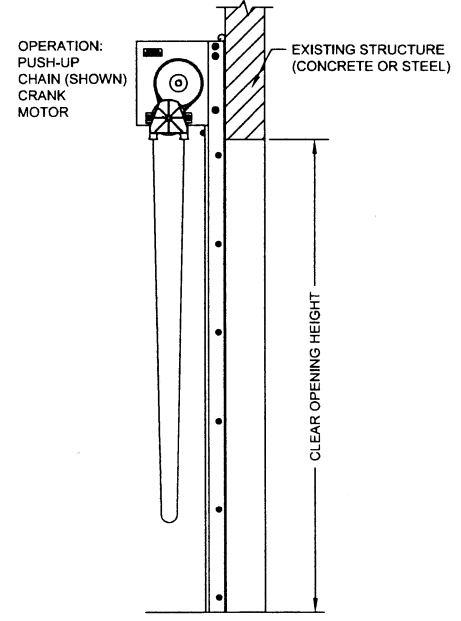


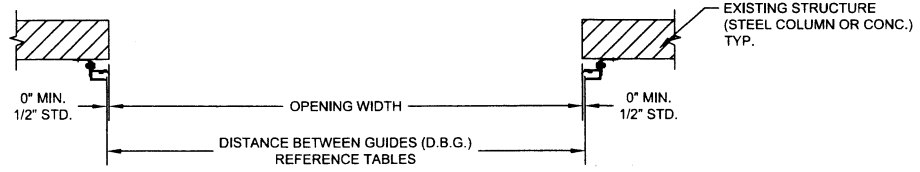
L/TR	REVISION	DATE	BY	E.C.O.
-	ORIGINAL ISSUE	10/22/04	R.M.	---
A	REV. MASONRY FAST. FROM KWIK BOLT II TO KWIK BOLT 3	09/02/05	R.M.	1214
B	REVISE PER 2007 FLORIDA BUILDING CODE	11/25/08	R.M.	---



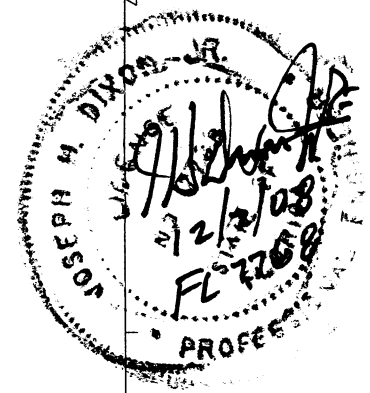
(A) ROLL-UP DOOR FRONT ELEVATION
N.T.S.



(C) ROLL-UP DOOR SIDE ELEVATION
N.T.S.



(B) ROLL-UP DOOR PLAN VIEW
N.T.S.



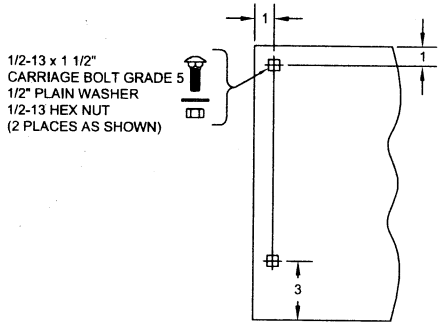
CORNELL 100 ELMWOOD AVENUE
CRESTWOOD INDUSTRIAL PARK
MOUNTAINTOP, PA 18707

TITLE
**WINDLOAD CONFIGURATIONS
INSULATED ROLLING DOOR**

SIZE	DRAWN	DWG NO	REV
C	R. MAGGIO	ES16-23-01	B

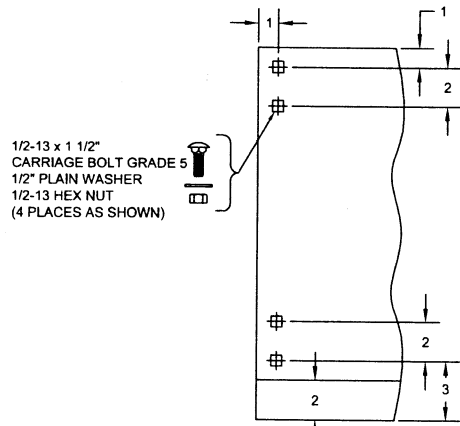
SCALE 1:16 SHEET 1 OF 23

L'TR	REVISION	DATE	BY	E.C.O.
*	ORIGINAL ISSUE	10/22/04	R.M.	---
A	REV. MASONRY FAST. FROM KWIK BOLT II TO KWIK BOLT 3	09/02/05	R.M.	1214
B	REVISE PER 2007 FLORIDA BUILDING CODE	11/25/08	R.M.	---



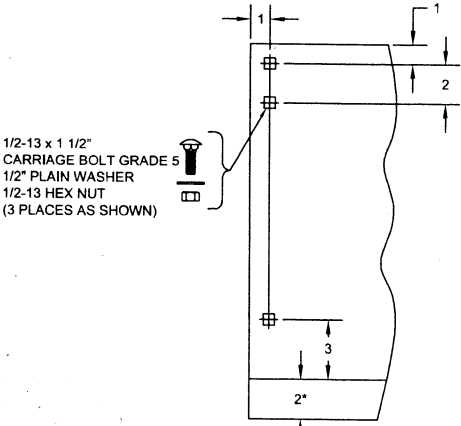
1/2-13 x 1 1/2"
CARRIAGE BOLT GRADE 5
1/2" PLAIN WASHER
1/2-13 HEX NUT
(2 PLACES AS SHOWN)

(D) THRU 6" Ø SHAFT ASSEMBLY
14" THRU 16" COIL DIMENSION



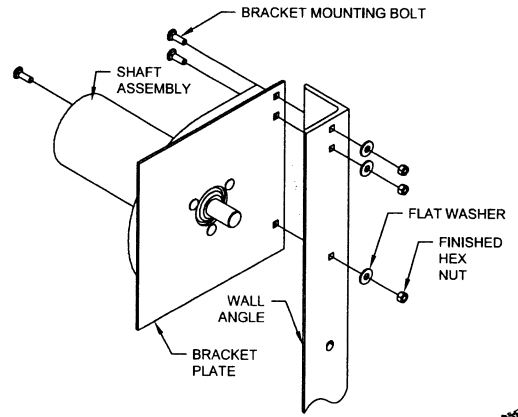
1/2-13 x 1 1/2"
CARRIAGE BOLT GRADE 5
1/2" PLAIN WASHER
1/2-13 HEX NUT
(4 PLACES AS SHOWN)

(F) 12" Ø OR LARGER SHAFT ASSEMBLY
17" AND LARGER COIL DIMENSION



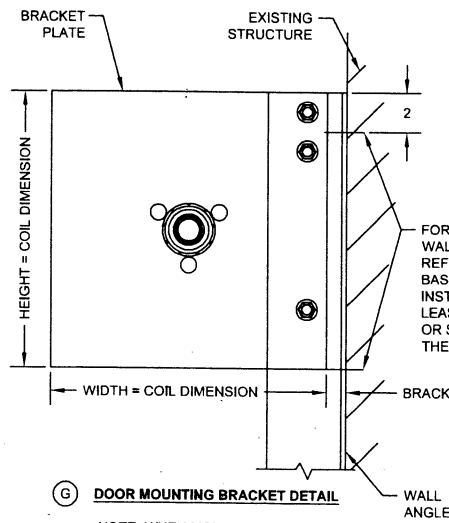
1/2-13 x 1 1/2"
CARRIAGE BOLT GRADE 5
1/2" PLAIN WASHER
1/2-13 HEX NUT
(3 PLACES AS SHOWN)

(E) THRU 10" Ø SHAFT ASSEMBLY
17" AND LARGER COIL DIMENSION
(*2" EXTENSION WHEN 8" AND 10"
SHAFT ASSEMBLY IS SUPPLIED)



(H) ISOMETRIC OF DOOR MOUNTING
BRACKET DETAIL
N.T.S.

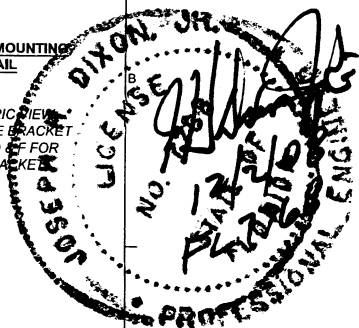
NOTE: THIS ISOMETRIC VIEW
DEPICTS DETAIL E TYPE BRACKET
ONLY. SEE DETAILS D & F FOR
OTHER TYPES OF BRACKET.



(G) DOOR MOUNTING BRACKET DETAIL

NOTE: WHEN MOTOR IS PROVIDED,
HEIGHT OR WIDTH DIMENSION MAY
INCREASE UP TO 2-1/2" BASED ON
MOTOR LOCATION.

FOR WALL ANGLE TO
WALL CONNECTION
REF. TABLES 1 THRU 22
BASED ON THE SPECIFIC
INSTALLATION. USE AT
LEAST ONE CONCRETE
OR STEEL FASTENER AT
THE INDICATED LOCATIONS.

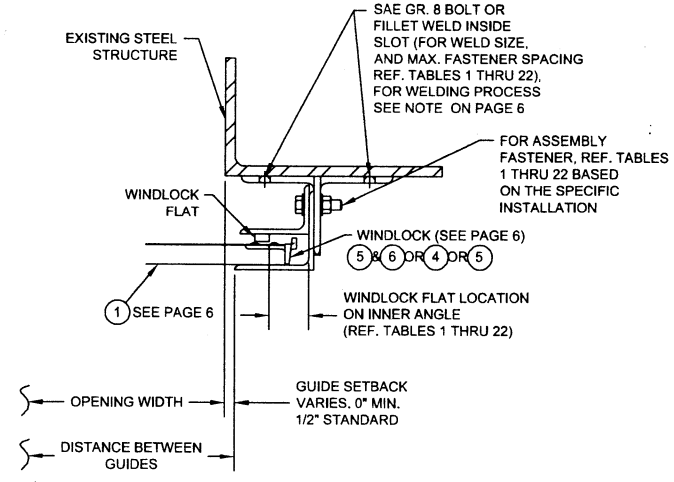


CORNELL 100 ELMWOOD AVENUE
CRESTWOOD INDUSTRIAL PARK
MOUNTAINTOP, PA 18707

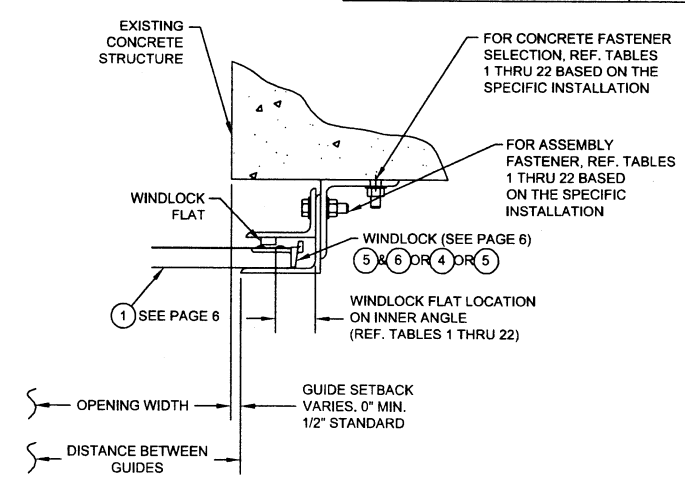
TITLE
**WINDLOAD CONFIGURATIONS
INSULATED ROLLING DOOR**

SIZE	DRAWN	DWG NO	REV
C	R. MAGGIO	ES16-23-01	B
SCALE	SHEET 2 OF 23		
1:4			

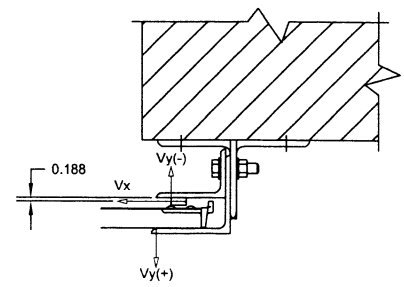
LTR	REVISION	DATE	BY	E.C.O.
*	ORIGINAL ISSUE	10/22/04	R.M.	—
A	REV. MASONRY FAST. FROM KWIK BOLT # TO KWIK BOLT 3	09/02/05	R.M.	1214
B	ADDED GRADE 8 BOLT FOR STEEL WALL FASTENER	11/25/08	R.M.	—



**I STEEL STRUCTURE ASSEMBLY
(BOX OR ZEE GUIDE)**



**J CONCRETE STRUCTURE ASSEMBLY
(ZEE GUIDE)**



**K SUPERIMPOSED LOAD DIAGRAM
LB/ft OF HEIGHT**

NOTES:
1. V_x AND V_y ARE HORIZONTAL AND VERTICAL COMPONENTS OF THE REACTION, RESPECTIVELY, RESULTING FROM WIND LOADS ON THE DOOR. THE EXISTING STRUCTURE MUST BE CAPABLE OF RESISTING THE RESULTING REACTIONS AT THE WALL DUE TO THE ECCENTRICITIES OF THE FORCES.

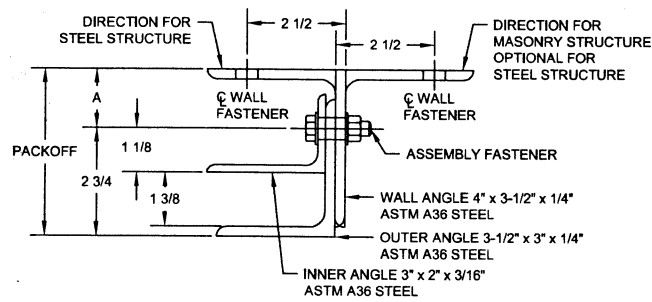


CORNELL 100 ELMWOOD AVENUE
CRESTWOOD INDUSTRIAL PARK
MOUNTAINTOP, PA 18707

TITLE
**WINDLOAD CONFIGURATIONS
INSULATED ROLLING DOOR**

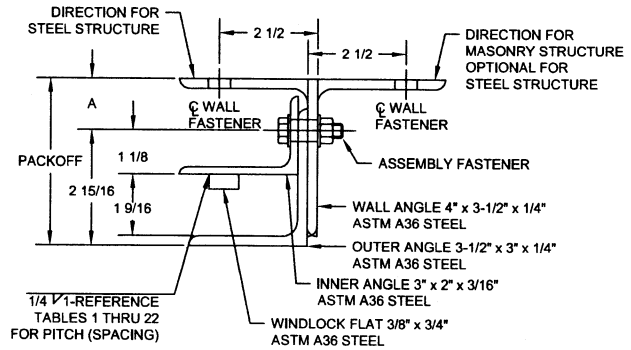
SIZE DRAWN	DWG NO	REV
C R.MAGGIO	ES16-23-01	B
SCALE 1:4	SHEET 3 OF 23	

L/TR	REVISION	DATE	BY	E.C.O.
-	ORIGINAL ISSUE	10/24/04	R.M.	—
A	REV. MASONRY FAST. FROM KWK BOLT # TO KWK BOLT 3	09/02/05	R.M.	1214
B	REMOVED ASSEMBLY NUMBERS	11/25/08	R.M.	—



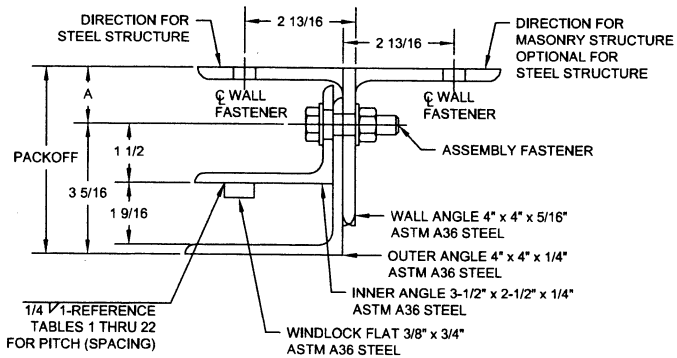
5-3/4	3
5-1/4	2-1/2
4-3/4	2
4-1/4	1-1/2
PACKOFF	A

(L) **GUIDE ASSEMBLY TYPE 344***
(NON-WINDLOCK)



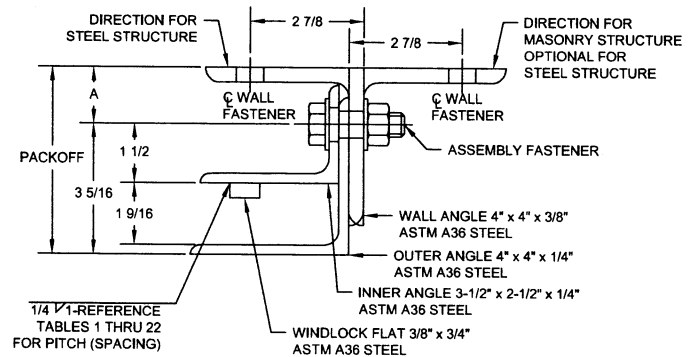
5-3/4	2-13/16
5-1/4	2-5/16
4-3/4	1-13/16
4-1/4	1-5/16
PACKOFF	A

(M) **GUIDE ASSEMBLY TYPE 344**



5-3/4	2-7/16
5-1/4	1-15/16
4-3/4	1-7/16
PACKOFF	A

(N) **GUIDE ASSEMBLY TYPE 445**



5-3/4	2-7/16
5-1/4	1-15/16
4-3/4	1-7/16
PACKOFF	A

(O) **GUIDE ASSEMBLY TYPE 446**

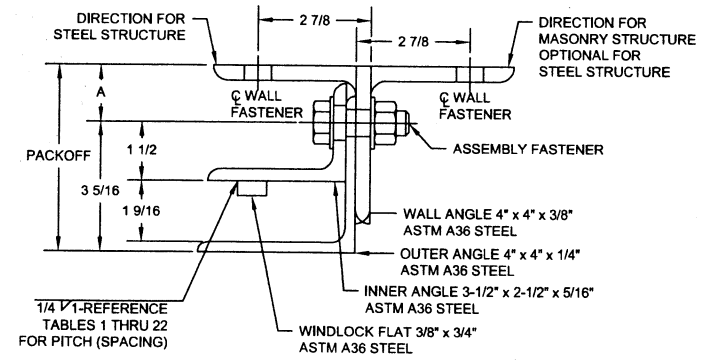


CORNELL 100 ELMWOOD AVENUE
CRESTWOOD INDUSTRIAL PARK
MOUNTAINTOP, PA 18707

TITLE
**WINDLOAD CONFIGURATIONS
INSULATED ROLLING DOOR**

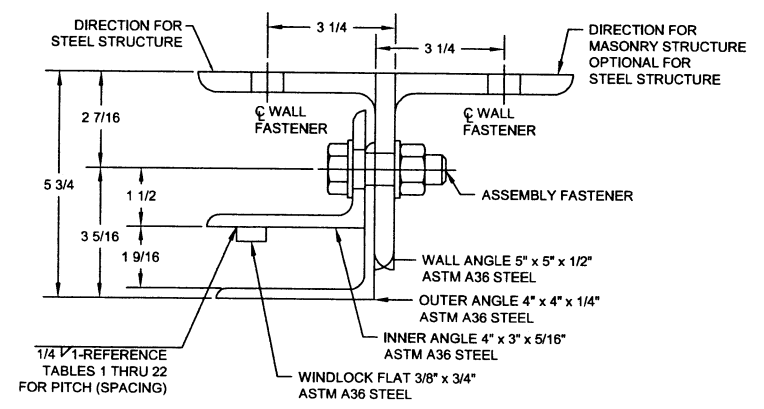
SIZE	DRAWN	DWG NO	REV
C	R. MAGGIO	ES16-23-01	B
SCALE	SHEET 4 OF 23		
	1:2		

LTR	REVISION	DATE	BY	E.C.O.
*	ORIGINAL ISSUE	10/24/04	R.M.	---
A	REV. MASONRY FAST. FROM KWIK BOLT II TO KWIK BOLT 3	09/02/05	R.M.	1214
B	REMOVED ASSEMBLY NUMBER	11/25/08	R.M.	---

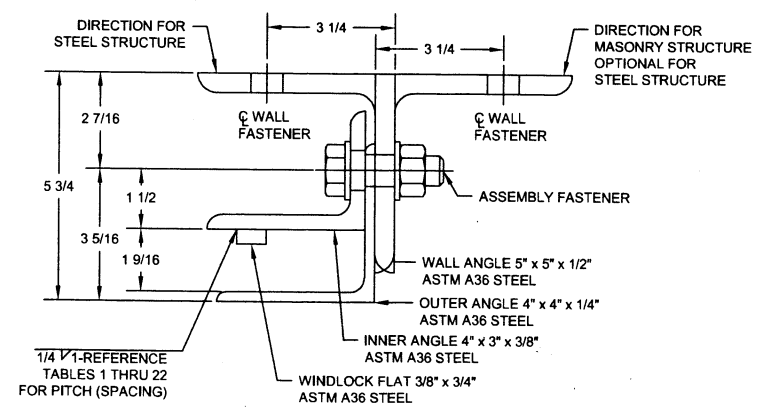


5-3/4	2-7/16
5-1/4	1-15/16
4-3/4	1-7/16
PACKOFF	A

(P) **GUIDE ASSEMBLY TYPE 546**



(Q) **GUIDE ASSEMBLY TYPE 548**

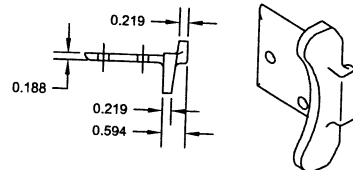
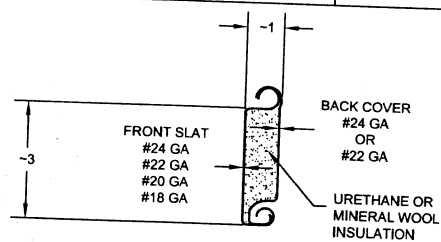


(R) **GUIDE ASSEMBLY TYPE 648**

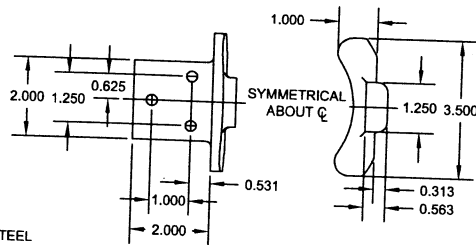


CORNELL		100 ELMWOOD AVENUE CRESTWOOD INDUSTRIAL PARK MOUNTAIN TOP, PA 18707	
TITLE WINDLOAD CONFIGURATIONS INSULATED ROLLING DOOR			
SIZE DRAWN	DWG NO	REV	
C	R. MAGGIO	ES16-23-01	B
SCALE	SHEET		OF
1:2	5		23

LTR	REVISION	DATE	BY	E.C.O.
*	ORIGINAL ISSUE	10/19/04	R.M.	—
A	REV. MASONRY FAST. FROM KWK BOLT II TO KWK BOLT 3	09/02/05	R.M.	1214
B	REVISED GENERAL NOTES	11/25/08	R.M.	—

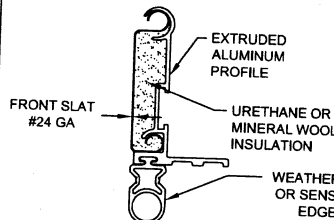


① **CP0001 / CP0651 SLAT**
TYPICAL SECTION
ASTM A653 HSLAS TYPE B GRADE 40 GALVANIZED
OR ASTM A653 HSLAS TYPE A GRADE 40 GALVANIZED
OR ASTM A653 STRUCTURAL STEEL GRADE 40 GALVANIZED
OR TYPE 304 STAINLESS STEEL (MIN. 40 KSI YIELD)
OR TYPE 430 STAINLESS STEEL (MIN. 40 KSI YIELD)
OR TYPE 201 STAINLESS STEEL (MIN. 40 KSI YIELD)

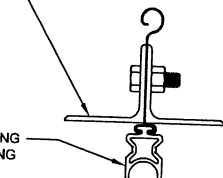


(2) 2 x 2 ASTM A36 STEEL OR
(2) 2 x 2 AISI TYPE 304 STAIN. STEEL
3/16 THICK THRU 24'-5" D.B.G.
3/16 THICK OVER 24'-5" D.B.G.

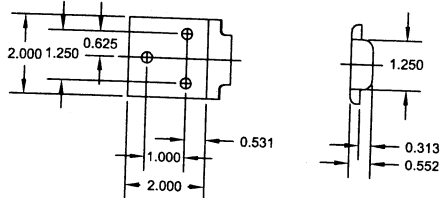
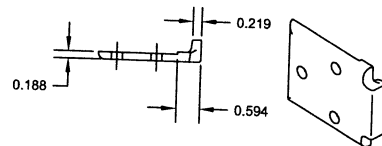
⑤ **CP0630 HEAVY ALT. CAST IRON**
ENDLOCK / WINDLOCK



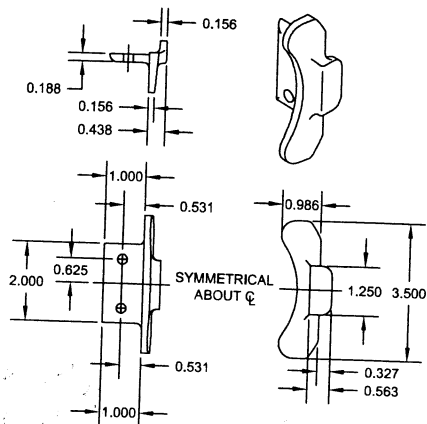
② **STANDARD BOTTOM BAR**
TYPICAL SECTION



③ **OPTIONAL BOTTOM BAR**
TYPICAL SECTION



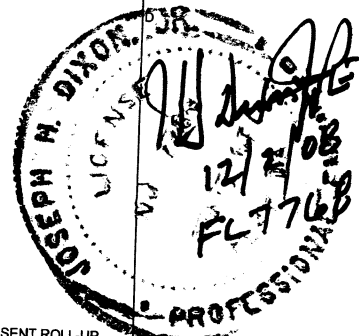
⑥ **CP0647 CAST IRON**
WINDLOCK



④ **CP0629 LIGHT ALT. CAST IRON**
ENDLOCK / WINDLOCK

GENERAL NOTES:

1. THESE PRODUCT EVALUATION DOCUMENTS REPRESENT ROLL-UP DOOR ASSEMBLIES DESIGNED AND TESTED IN ACCORDANCE WITH THE FLORIDA BUILDING CODE, THE INTERNATIONAL BUILDING CODE, AND THE STANDARD BUILDING CODE.
2. DOORS MANUFACTURED WITH SLATS 20/24 GA. OR THICKER WILL MEET THE REQUIREMENTS OF THE FLORIDA BUILDING CODE AS TESTED PER TAS 201 AND TAS 203 FOR LARGE MISSILE IMPACT AGAINST BOTH SIDES OF THE SLAT.
3. A 33% INCREASE IN ALLOWABLE STRESS HAS NOT BEEN USED IN THE DESIGN OF THIS PRODUCT.
4. DETERMINE THE POSITIVE AND NEGATIVE DESIGN LOADS TO USE WHEN REFERENCING THESE DOCUMENTS IN ACCORDANCE WITH THE GOVERNING CODE AND WIND VELOCITY.
5. THESE PRODUCT EVALUATION DOCUMENTS ARE SUITABLE TO BE APPLIED BY THE CONTRACTOR PROVIDED THE CONTRACTOR DOES NOT DEVIATE FROM THE CONDITIONS DETAILED HEREIN AND THE CONTRACTOR VERIFIES THE EXISTING STRUCTURE IS CAPABLE OF SUPPORTING THE SUPERIMPOSED LOADS V_x & V_y ON THE JAMBS OF THE DOOR.
6. WHEN THE SITE CONDITIONS DEVIATE FROM THESE PRODUCT EVALUATION DOCUMENTS, SITE SPECIFIC DOCUMENTS SHALL BE PREPARED BY A DULY LICENSED AND REGISTERED ENGINEER OR ARCHITECT.
7. ALL WELDING SHALL BE PERFORMED BY QUALIFIED WELDERS IN ACCORDANCE WITH A.W.S. SPECIFICATIONS, LATEST EDITION. ALL WELDING ELECTRODES SHALL CONFORM TO A.W.S. A5.1 GRADE E-70. MINIMUM WELDING PROCESSES SHALL BE ARC WELDING A.W.S. E7014 OR MIG WELDING A.W.S. ER70S-6.
8. DOOR MAY BE INSTALLED ON THE INSIDE OR OUTSIDE OF AN EXTERIOR WALL.



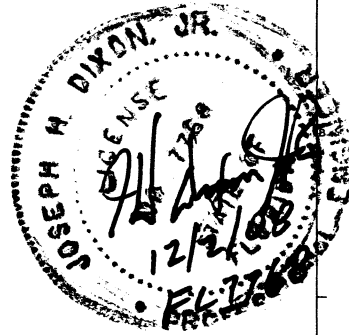
CORNELL		100 ELMWOOD AVENUE CRESTWOOD INDUSTRIAL PARK MOUNTAINTOP, PA 18707	
TITLE WINDLOAD CONFIGURATIONS INSULATED ROLLING DOOR			
SIZE DRAWN C R. MAGGIO	DWG NO ES16-23-01	REV B	
SCALE 1:2	SHEET 6 OF 23		

24/24 GA. GALVANIZED OR STAINLESS STEEL - 30 P.S.F.

LTR	REVISION	DATE	BY	E.C.O.
-	ORIGINAL ISSUE	10/14/04	R.M.	-
A	REVISE WINDLOAD FAST TO DRIVE BOLT 3 AND REVISE POWERS SPACING	09/12/05	R.M.	12/14
B	ADDED EMBEDMENT DEPTH AND EDGE DISTANCE FOR ANCHORS	11/29/08	R.M.	---

TABLE 1 Distance Between Guides (D.B.G.) thru: (FT. - IN.)	Windlock Flat Location on Inner Angle (IN.)	Windlock	Guide Assembly Type	Windlock Flat Weld Pitch Spacing (IN.)	Fastener Diameter (IN.)	Assembly Fastener SAE Gr. 8 Maximum O.C. Spacing (IN.)	Wall Fasteners - Concrete Structure Min 3,000 PSI									Wall fasteners - Steel Structure Min 1/4" fillet weld entire slot perimeter or Gr. 8 bolt		Superimposed Loads POSITIVE (+)		Superimposed Loads NEGATIVE (-)	
							Hilti Kwik Bolt 3			Simpson Wedge-All			Powers Wedge-Bolt			Slot	Maximum O.C. Spacing (IN.)	Vx (LBS.)	Vy (LBS.)	Vx (LBS.)	Vy (LBS.)
							Maximum O.C. Spacing (IN.)	Minimum Embedment (IN.)	Minimum Edge Distance (IN.)	Maximum O.C. Spacing (IN.)	Minimum Embedment (IN.)	Minimum Edge Distance (IN.)	Maximum O.C. Spacing (IN.)	Minimum Embedment (IN.)	Minimum Edge Distance (IN.)						
2'-5"	N/R	N/R	344*	N/R	3/8	24	24	2 1/2	5 3/4	24	2 9/16	5 3/4	24	2 1/2	5 3/4	9/16" x 3/4"	24	0	37	0	35
3'-5"	N/R	N/R	344*	N/R	3/8	24	24	2 1/2	5 3/4	24	2 9/16	5 3/4	24	2 1/2	5 3/4	9/16" x 3/4"	24	0	52	0	50
4'-5"	N/R	N/R	344*	N/R	3/8	24	24	2 1/2	5 3/4	24	2 9/16	5 3/4	24	2 1/2	5 3/4	9/16" x 3/4"	24	0	67	0	65
5'-5"	N/R	N/R	344*	N/R	3/8	24	24	2 1/2	5 3/4	24	2 9/16	5 3/4	24	2 1/2	5 3/4	9/16" x 3/4"	24	0	82	0	80
6'-5"	N/R	N/R	344*	N/R	3/8	24	24	2 1/2	5 3/4	21	2 9/16	5 3/4	24	2 1/2	5 3/4	9/16" x 3/4"	24	0	97	0	95
7'-5"	N/R	N/R	344*	N/R	3/8	24	24	2 1/2	5 3/4	18	2 9/16	5 3/4	21	2 1/2	5 3/4	9/16" x 3/4"	24	0	112	0	110
8'-5"	N/R	N/R	344*	N/R	3/8	24	21	2 1/2	5 3/4	16	2 9/16	5 3/4	19	2 1/2	5 3/4	9/16" x 3/4"	24	0	127	0	125
9'-5"	N/R	N/R	344*	N/R	3/8	24	19	2 1/2	5 3/4	14	2 9/16	5 3/4	17	2 1/2	5 3/4	9/16" x 3/4"	24	0	142	0	140
10'-5"	N/R	N/R	344*	N/R	3/8	24	17	2 1/2	5 3/4	13	2 9/16	5 3/4	15	2 1/2	5 3/4	9/16" x 3/4"	24	0	157	0	155
11'-5"	N/R	N/R	344*	N/R	3/8	24	16	2 1/2	5 3/4	12	2 9/16	5 3/4	14	2 1/2	5 3/4	9/16" x 3/4"	24	0	172	0	170
12'-5"	1.5	CP0629	344	12	3/8	18	19	2 1/2	5 3/4	14	2 9/16	5 3/4	15	2 1/2	5 3/4	9/16" x 3/4"	18	74	187	120	189
13'-5"	1.5	CP0629	344	12	3/8	18	19	2 1/2	5 3/4	16	2 9/16	5 3/4	14	2 1/2	5 3/4	9/16" x 3/4"	18	299	202	335	205
14'-5"	1.5	CP0629	344	12	3/8	18	13	2 1/2	5 3/4	11	2 9/16	5 3/4	9	2 1/2	5 3/4	9/16" x 3/4"	18	480	217	507	220
15'-5"	1.5	CP0629	344	12	3/8	15	11	2 1/2	5 3/4	8	2 9/16	5 3/4	7	2 1/2	5 3/4	9/16" x 3/4"	18	631	232	652	235
16'-5"	1.5	CP0629	445	12	1/2	18	14	3 1/2	6 13/16	15	4 1/2	6 13/16	11	3 1/2	6 13/16	9/16" x 3/4"	18	745	247	786	252
17'-5"	1.5	CP0629	445	12	1/2	18	13	3 1/2	6 13/16	14	4 1/2	6 13/16	10	3 1/2	6 13/16	9/16" x 3/4"	18	852	262	886	266
18'-5"	1.5	CP0629	445	12	1/2	18	12	3 1/2	6 13/16	12	4 1/2	6 13/16	9	3 1/2	6 13/16	9/16" x 3/4"	18	944	277	972	281
19'-5"	1.5	CP0630	445	11	1/2	17	10	3 1/2	6 13/16	10	4 1/2	6 13/16	8	3 1/2	6 13/16	9/16" x 3/4"	18	1116	292	1140	296
20'-5"	1.625	CP0630	445	11	1/2	17	10	3 1/2	6 13/16	10	4 1/2	6 13/16	7	3 1/2	6 13/16	9/16" x 3/4"	17	1141	307	1160	311
21'-5"	1.75	CP0630	445	11	1/2	16	9	3 1/2	6 13/16	10	4 1/2	6 13/16	7	3 1/2	6 13/16	9/16" x 3/4"	17	1175	322	1190	325
22'-5"	1.875	CP0630	446	11	5/8	18	13	4	6 7/8	13	4 1/2	6 7/8	10	4	6 7/8	11/16" x 7/8"	18	1213	336	1225	340
23'-5"	2	CP0630	446	10	5/8	18	12	4	6 7/8	13	4 1/2	6 7/8	10	4	6 7/8	11/16" x 7/8"	18	1254	351	1264	354
24'-5"	2	CP0630	446	10	5/8	18	11	4	6 7/8	11	4 1/2	6 7/8	9	4	6 7/8	11/16" x 7/8"	16	1384	366	1393	370
25'-5"	2	CP0630 & CP0647	548	9	5/8	18	10	4	6 7/8	10	4 1/2	6 7/8	8	4	6 7/8	11/16" x 7/8"	15	1513	381	1521	385
26'-5"	2	CP0630 & CP0647	548	9	5/8	18	10	4	6 7/8	10	4 1/2	6 7/8	8	4	6 7/8	11/16" x 7/8"	14	1641	397	1649	400
27'-5"	2	CP0630 & CP0647	548	9	5/8	17	9	4	6 7/8	9	4 1/2	6 7/8	7	4	6 7/8	11/16" x 7/8"	13	1769	412	1776	415
28'-5"	2.5	CP0630 & CP0647	548	9	3/4	18	15	4 3/4	7 1/2	13	5	7 1/2	12	5	7 1/2	13/16" x 1"	18	1541	425	1544	428
29'-5"	2.5	CP0630 & CP0647	548	9	3/4	18	14	4 3/4	7 1/2	13	5	7 1/2	11	5	7 1/2	13/16" x 1"	18	1651	441	1654	443
30'-5"	2.5	CP0630 & CP0647	548	9	3/4	18	13	4 3/4	7 1/2	12	5	7 1/2	10	5	7 1/2	13/16" x 1"	18	1760	456	1763	458
31'-5"	2.5	CP0630 & CP0647	548	8	3/4	18	12	4 3/4	7 1/2	11	5	7 1/2	10	5	7 1/2	13/16" x 1"	18	1870	471	1873	473
32'-5"	2.5	CP0630 & CP0647	548	8	3/4	18	12	4 3/4	7 1/2	11	5	7 1/2	9	5	7 1/2	13/16" x 1"	18	1980	486	1983	489
33'-5"	2.5	CP0630 & CP0647	548	8	3/4	18	11	4 3/4	7 1/2	10	5	7 1/2	9	5	7 1/2	13/16" x 1"	18	2091	501	2093	504
34'-5"	2.5	CP0630 & CP0647	648	8	3/4	18	10	4 3/4	7 1/2	9	5	7 1/2	N/A	N/A	N/A	13/16" x 1"	17	2202	516	2204	519
35'-5"	2.5	CP0630 & CP0647	648	8	3/4	18	9	4 3/4	7 1/2	9	5	7 1/2	N/A	N/A	N/A	13/16" x 1"	16	2314	532	2316	534
36'-5"	2.5	CP0630 & CP0647	648	8	3/4	18	8	4 3/4	7 1/2	9	5	7 1/2	N/A	N/A	N/A	13/16" x 1"	15	2427	547	2429	550
37'-5"	2.5	CP0630 & CP0647	648	7	3/4	17	7	4 3/4	7 1/2	8	5	7 1/2	N/A	N/A	N/A	13/16" x 1"	15	2540	562	2543	565
38'-5"	2.5	CP0630 & CP0647	648	7	3/4	17	7	4 3/4	7 1/2	8	5	7 1/2	N/A	N/A	N/A	13/16" x 1"	14	2655	578	2657	580

- NOTES:
 1. N/R - not required
 2. * - non - windlock guide assembly
 3. N/A - not available



CORNELL 100 ELMWOOD AVENUE
 CRESTWOOD INDUSTRIAL PARK
 HIGHTSBURG, PA 17037

TITLE: WINDLOAD CONFIGURATIONS, INSULATED ROLLING DOOR

SIZE DRAWN: DWG NO: ES16-23-01 REV: B
 D. R. MAGGIO

SCALE: 1:1 SHEET: 7 OF 23

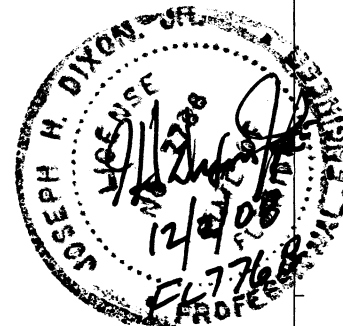
24/24 GA. GALVANIZED OR STAINLESS STEEL - 40 P.S.F.

TABLE 2 Distance Between Guides (D.B.G.) thru: (FT.-IN.)	Windlock Flat Location on Inner Angle (IN.)	Windlock	Guide Assembly Type	Windlock Flat Weld Pitch Spacing (IN.)	Fastener Diameter (IN.)	Assembly Fastener SAE Gr. 8 Maximum O.C. Spacing (IN.)	Wall Fasteners - Concrete Structure Min 3,000 PSI									Wall fasteners - Steel Structure Min 1/4" fillet weld entire slot perimeter or Gr. 8 bolt		Superimposed Loads POSITIVE(+)		Superimposed Loads NEGATIVE(-)	
							HiTi Kwik Bolt 3			Simpson Wedge-All			Powers Wedge-Bolt			Slot	Maximum O.C. Spacing (IN.)	Vx (LBS.)	Vy (LBS.)	Vx (LBS.)	Vy (LBS.)
							Maximum O.C. Spacing (IN.)	Minimum Embedment (IN.)	Minimum Edge Distance (IN.)	Maximum O.C. Spacing (IN.)	Minimum Embedment (IN.)	Minimum Edge Distance (IN.)	Maximum O.C. Spacing (IN.)	Minimum Embedment (IN.)	Minimum Edge Distance (IN.)						
							24	2 1/2	5 3/4	24	2 9/16	5 3/4	24	2 1/2	5 3/4	24	2 1/2	5 3/4	9/16" x 3/4"	24	0
3'-5"	N/R	N/R	344*	N/R	3/8	24	24	2 1/2	5 3/4	24	2 9/16	5 3/4	24	2 1/2	5 3/4	9/16" x 3/4"	24	0	70	0	67
4'-5"	N/R	N/R	344*	N/R	3/8	24	24	2 1/2	5 3/4	23	2 9/16	5 3/4	24	2 1/2	5 3/4	9/16" x 3/4"	24	0	90	0	87
5'-5"	N/R	N/R	344*	N/R	3/8	24	24	2 1/2	5 3/4	19	2 9/16	5 3/4	22	2 1/2	5 3/4	9/16" x 3/4"	24	0	110	0	107
6'-5"	N/R	N/R	344*	N/R	3/8	24	21	2 1/2	5 3/4	16	2 9/16	5 3/4	19	2 1/2	5 3/4	9/16" x 3/4"	24	0	130	0	127
7'-5"	N/R	N/R	344*	N/R	3/8	24	18	2 1/2	5 3/4	14	2 9/16	5 3/4	16	2 1/2	5 3/4	9/16" x 3/4"	24	0	150	0	147
8'-5"	N/R	N/R	344*	N/R	3/8	24	16	2 1/2	5 3/4	12	2 9/16	5 3/4	14	2 1/2	5 3/4	9/16" x 3/4"	24	0	170	0	167
9'-5"	N/R	N/R	344*	N/R	3/8	24	14	2 1/2	5 3/4	11	2 9/16	5 3/4	13	2 1/2	5 3/4	9/16" x 3/4"	24	0	190	0	187
10'-5"	N/R	N/R	344*	N/R	3/8	24	13	2 1/2	5 3/4	10	2 9/16	5 3/4	11	2 1/2	5 3/4	9/16" x 3/4"	24	0	210	0	207
11'-5"	1.5	CP0629	344	12	3/8	18	15	2 1/2	5 3/4	12	2 9/16	5 3/4	11	2 1/2	5 3/4	9/16" x 3/4"	18	377	230	444	233
12'-5"	1.5	CP0629	344	12	3/8	14	9	2 1/2	5 3/4	7	2 9/16	5 3/4	6	2 1/2	5 3/4	9/16" x 3/4"	18	713	250	766	254
13'-5"	1.5	CP0630	445	11	1/2	18	11	3 1/2	6 13/16	12	4 1/2	6 13/16	8	3 1/2	6 13/16	9/16" x 3/4"	18	977	270	1060	277
14'-5"	1.5	CP0630	445	10	1/2	16	9	3 1/2	6 13/16	10	4 1/2	6 13/16	7	3 1/2	6 13/16	9/16" x 3/4"	16	1217	290	1286	297
15'-5"	1.5	CP0630	446	10	5/8	18	11	4	6 7/8	11	4 1/2	6 7/8	9	4	6 7/8	11/16" x 7/8"	16	1426	311	1484	318
16'-5"	1.5	CP0630 & CP0647	546	9	5/8	18	10	4	6 7/8	10	4 1/2	6 7/8	8	4	6 7/8	11/16" x 7/8"	14	1606	331	1656	338
17'-5"	1.5	CP0630 & CP0647	546	9	5/8	18	9	4	6 7/8	9	4 1/2	6 7/8	7	4	6 7/8	11/16" x 7/8"	13	1771	351	1814	358
18'-5"	1.5	CP0630 & CP0647	548	8	3/4	18	12	4 3/4	7 1/2	9	5	7 1/2	10	5	7 1/2	13/16" x 1"	18	1927	372	1968	379
19'-5"	1.5	CP0630 & CP0647	548	8	3/4	18	12	4 3/4	7 1/2	11	5	7 1/2	9	5	7 1/2	13/16" x 1"	18	2068	392	2105	399
20'-5"	1.5	CP0630 & CP0647	548	8	3/4	18	11	4 3/4	7 1/2	10	5	7 1/2	9	5	7 1/2	13/16" x 1"	17	2209	412	2241	420
21'-5"	1.5	CP0630 & CP0647	548	8	3/4	18	9	4 3/4	7 1/2	10	5	7 1/2	N/A	N/A	N/A	13/16" x 1"	16	2349	433	2379	440
22'-5"	1.5	CP0630 & CP0647	548	7	3/4	18	8	4 3/4	7 1/2	9	5	7 1/2	N/A	N/A	N/A	13/16" x 1"	15	2505	453	2532	460
23'-5"	1.5	CP0630 & CP0647	648	7	3/4	18	7	4 3/4	7 1/2	9	5	7 1/2	N/A	N/A	N/A	13/16" x 1"	14	2734	474	2760	481
24'-5"	1.5	CP0630 & CP0647	648	7	3/4	18	7	4 3/4	7 1/2	8	5	7 1/2	N/A	N/A	N/A	13/16" x 1"	13	2714	493	2737	500
25'-5"	1.5	CP0630 & CP0647	648	7	3/4	17	6	4 3/4	7 1/2	8	5	7 1/2	N/A	N/A	N/A	13/16" x 1"	13	2924	514	2946	521

NOTES:

1. N/R - not required
2. * - non - windlock guide assembly
3. N/A - not available

REV	REVISION	DATE	BY	E.C.D.
0	ORIGINAL ISSUE	10/14/04	R.M.	-
A	REVISE MASONRY FAST. TO DRIP BOLT 2 AND REVISE POWERS SPACING	09/12/05	R.M.	1214
B	ADDED EMBEDMENT DEPTH AND EDGE DISTANCE FOR ANCHORS	11/25/08	R.M.	-



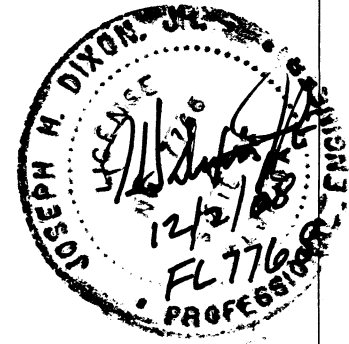
CORNELL		100 ELMWOOD AVENUE CRESTWOOD INDUSTRIAL PARK MOUNTAINTOP, PA 18707
TITLE WINDLOAD CONFIGURATIONS, INSULATED ROLLING DOOR		
SIZE (DRAWN)	DWG NO.	REV
D. R. MAGGIO	ES16-23-01	B
SCALE: 1:1	SHEET 8 OF 23	

REV	REVISION	DATE	BY	E.C.O.
1	ORIGINAL ISSUE	10/14/04	R.M.	
2	REVIS WINDLOCK FAST. TO MEET BOLTS AND REVERSE POWER SPACING	09/12/05	R.M.	1214
3	ADDED EMBEDMENT DEPTH AND EDGE DISTANCE FOR ANCHORS	11/29/08	R.M.	

24/24 GA. GALVANIZED OR STAINLESS STEEL - 60 P.S.F.																						
TABLE 3	Distance Between Guides (D.B.G.) thru: (FT.- IN.)	Windlock Flat Location on Inner Angle (IN.)	Windlock	Guide Assembly Type	Windlock Flat Weld Pitch Spacing (IN.)	Fastener Diameter (IN.)	Assembly Fastener SAE Gr. 8 Maximum O.C. Spacing (IN.)	Wall Fasteners - Concrete Structure Min 3,000 PSI									Wall fasteners - Steel Structure Min 1/4" fillet weld entire slot perimeter or Gr. 8 bolt		Superimposed Loads POSITIVE (+)		Superimposed Loads NEGATIVE (-)	
								Hiki Kwik Bolt 3			Simpson Wedge-All			Powers Wedge-Bolt			Slot	Maximum O.C. Spacing (IN.)	Vx (LBS.)	Vy (LBS.)	Vx (LBS.)	Vy (LBS.)
								Maximum O.C. Spacing (IN.)	Minimum Embedment (IN.)	Minimum Edge Distance (IN.)	Maximum O.C. Spacing (IN.)	Minimum Embedment (IN.)	Minimum Edge Distance (IN.)	Maximum O.C. Spacing (IN.)	Minimum Embedment (IN.)	Minimum Edge Distance (IN.)						
								2'-5"	3'-5"	4'-5"	5'-5"	6'-5"	7'-5"	8'-5"	9'-5"	10'-5"	11'-5"	12'-5"				
	N/R	N/R	344*	N/R	3/8	24	24	2 1/2	5 3/4	24	2 9/16	5 3/4	24	2 1/2	5 3/4	9/16" x 3/4"	24	0	62	0	58	
	N/R	N/R	344*	N/R	3/8	24	24	2 1/2	5 3/4	24	2 9/16	5 3/4	24	2 1/2	5 3/4	9/16" x 3/4"	24	0	87	0	83	
	N/R	N/R	344*	N/R	3/8	24	24	2 1/2	5 3/4	18	2 9/16	5 3/4	22	2 1/2	5 3/4	9/16" x 3/4"	24	0	112	0	108	
	N/R	N/R	344*	N/R	3/8	24	20	2 1/2	5 3/4	15	2 9/16	5 3/4	18	2 1/2	5 3/4	9/16" x 3/4"	24	0	137	0	133	
	N/R	N/R	344*	N/R	3/8	24	17	2 1/2	5 3/4	13	2 9/16	5 3/4	15	2 1/2	5 3/4	9/16" x 3/4"	24	0	162	0	158	
	N/R	N/R	344*	N/R	3/8	24	15	2 1/2	5 3/4	11	2 9/16	5 3/4	13	2 1/2	5 3/4	9/16" x 3/4"	24	0	187	0	183	
	N/R	N/R	344*	N/R	3/8	24	13	2 1/2	5 3/4	9	2 9/16	5 3/4	11	2 1/2	5 3/4	9/16" x 3/4"	24	0	212	0	208	
	N/R	N/R	344*	N/R	3/8	24	12	2 1/2	5 3/4	8	2 9/16	5 3/4	10	2 1/2	5 3/4	9/16" x 3/4"	24	0	237	0	233	
	1.5	CP0629	445	12	1/2	18	14	3 1/2	6 13/16	7	4 1/2	6 13/16	10	3 1/2	6 13/16	9/16" x 3/4"	18	669	262	851	271	
	1.5	CP0630	446	10	5/8	18	12	4	6 7/8	12	4 1/2	6 7/8	9	4	6 7/8	1 1/16" x 7/8"	17	1256	288	1398	298	
	1.5	CP0630 & CP0647	548	8	3/4	18	12	4 3/4	7 1/2	12	5	7 1/2	10	5	7 1/2	13/16" x 1"	18	1925	316	2055	327	

24/24 GA. GALVANIZED OR STAINLESS STEEL - 60 P.S.F.																						
TABLE 4	Distance Between Guides (D.B.G.) thru: (FT.- IN.)	Windlock Flat Location on Inner Angle (IN.)	Windlock	Guide Assembly Type	Windlock Flat Weld Pitch Spacing (IN.)	Fastener Diameter (IN.)	Assembly Fastener SAE Gr. 8 Maximum O.C. Spacing (IN.)	Wall Fasteners - Concrete Structure Min 3,000 PSI									Wall fasteners - Steel Structure Min 1/4" fillet		Superimposed Loads POSITIVE (+)		Superimposed Loads NEGATIVE (-)	
								Hiki Kwik Bolt 3			Simpson Wedge-All			Powers Wedge-Bolt			Slot	Maximum O.C. Spacing (IN.)	Vx (LBS.)	Vy (LBS.)	Vx (LBS.)	Vy (LBS.)
								Maximum O.C. Spacing (IN.)	Minimum Embedment (IN.)	Minimum Edge Distance (IN.)	Maximum O.C. Spacing (IN.)	Minimum Embedment (IN.)	Minimum Edge Distance (IN.)	Maximum O.C. Spacing (IN.)	Minimum Embedment (IN.)	Minimum Edge Distance (IN.)						
								2'-5"	3'-5"	4'-5"	5'-5"	6'-5"	7'-5"	8'-5"	9'-5"							
	N/R	N/R	344*	N/R	3/8	24	24	2 1/2	5 3/4	24	2 9/16	5 3/4	24	2 1/2	5 3/4	9/16" x 3/4"	24	0	74	0	70	
	N/R	N/R	344*	N/R	3/8	24	24	2 1/2	5 3/4	20	2 9/16	5 3/4	23	2 1/2	5 3/4	9/16" x 3/4"	24	0	104	0	100	
	N/R	N/R	344*	N/R	3/8	24	20	2 1/2	5 3/4	15	2 9/16	5 3/4	18	2 1/2	5 3/4	9/16" x 3/4"	24	0	134	0	130	
	N/R	N/R	344*	N/R	3/8	24	17	2 1/2	5 3/4	12	2 9/16	5 3/4	15	2 1/2	5 3/4	9/16" x 3/4"	24	0	164	0	160	
	N/R	N/R	344*	N/R	3/8	24	14	2 1/2	5 3/4	10	2 9/16	5 3/4	12	2 1/2	5 3/4	9/16" x 3/4"	24	0	194	0	190	
	N/R	N/R	344*	N/R	3/8	24	12	2 1/2	5 3/4	9	2 9/16	5 3/4	11	2 1/2	5 3/4	9/16" x 3/4"	24	0	224	0	220	
	N/R	N/R	344*	N/R	3/8	24	11	2 1/2	5 3/4	8	2 9/16	5 3/4	9	2 1/2	5 3/4	9/16" x 3/4"	24	0	254	0	250	
	1.5	CP0630	445	11	1/2	17	10	3 1/2	6 13/16	10	4 1/2	6 13/16	7	3 1/2	6 13/16	9/16" x 3/4"	18	985	285	1232	297	

NOTES:
1. N/R - not required
2. * - non - windlock guide assembly
3. N/A - not available



CORNELL 100 ELMWOOD AVENUE
CRESTWOOD INDUSTRIAL PARK
MCURTAINTOP, PA 18707

TITLE
**WINDLOCK CONFIGURATIONS,
INSULATED ROLLING DOOR**

SIZE DRAWN DWG NO. REV
D. R. MAGGIO ES16-23-01 B
SCALE 1:1 SHEET 9 OF 23

22/24 GA. GALVANIZED OR STAINLESS STEEL - 40 P.S.F.

LTR	REVISION	DATE	BY	E.C.O.
1	ORIGINAL ISSUE	10/14/04	R.M.	
A	REVERSE MASTY PAST, TO BE BOLT AND REVERSE POWERS SPACING	09/12/05	R.M.	1214
B	ADDED EMBEDMENT DEPTH AND EDGE DISTANCE FOR ANCHORS	11/25/08	R.M.	

Distance Between Guides (D.B.G.) thru (FT.-IN.)	Windlock Flat Location on Inner Angle (IN.)	Windlock	Guide Assembly Type	Windlock Flat Weld Pitch Spacing (IN.)	Fastener Diameter (IN.)	Assembly Fastener SAE Gr. 8 Maximum O.C. Spacing (IN.)	Wall Fasteners - Concrete Structure Min 3,000 PSI									Wall fasteners - Steel Structure Min 1/4" fillet weld entire slot perimeter or Gr. 8 bolt		Superimposed Loads POSITIVE(++)		Superimposed Loads NEGATIVE(-)	
							Hilti Kwik Bolt 3			Simpson Wedge-All			Powers Wedge-Bolt			Slot	Maximum O.C. Spacing (IN.)	Vx (LBS.)	Vy (LBS.)	Vx (LBS.)	Vy (LBS.)
							Maximum O.C. Spacing (IN.)	Minimum Embedment (IN.)	Minimum Edge Distance (IN.)	Maximum O.C. Spacing (IN.)	Minimum Embedment (IN.)	Minimum Edge Distance (IN.)	Maximum O.C. Spacing (IN.)	Minimum Embedment (IN.)	Minimum Edge Distance (IN.)						
							24	24	24	24	24	24	24	24	24	24	24	24	24	24	24
2'-5"	N/R	N/R	344*	N/R	3/8	24	24	2 1/2	5 3/4	24	2 9/16	5 3/4	24	2 1/2	5 3/4	9/16" x 3/4"	24	0	50	0	47
3'-5"	N/R	N/R	344*	N/R	3/8	24	24	2 1/2	5 3/4	24	2 9/16	5 3/4	24	2 1/2	5 3/4	9/16" x 3/4"	24	0	70	0	67
4'-5"	N/R	N/R	344*	N/R	3/8	24	24	2 1/2	5 3/4	23	2 9/16	5 3/4	24	2 1/2	5 3/4	9/16" x 3/4"	24	0	90	0	87
5'-5"	N/R	N/R	344*	N/R	3/8	24	24	2 1/2	5 3/4	19	2 9/16	5 3/4	22	2 1/2	5 3/4	9/16" x 3/4"	24	0	110	0	107
6'-5"	N/R	N/R	344*	N/R	3/8	24	21	2 1/2	5 3/4	16	2 9/16	5 3/4	19	2 1/2	5 3/4	9/16" x 3/4"	24	0	130	0	127
7'-5"	N/R	N/R	344*	N/R	3/8	24	18	2 1/2	5 3/4	14	2 9/16	5 3/4	16	2 1/2	5 3/4	9/16" x 3/4"	24	0	150	0	147
8'-5"	N/R	N/R	344*	N/R	3/8	24	16	2 1/2	5 3/4	12	2 9/16	5 3/4	14	2 1/2	5 3/4	9/16" x 3/4"	24	0	170	0	167
9'-5"	N/R	N/R	344*	N/R	3/8	24	14	2 1/2	5 3/4	11	2 9/16	5 3/4	13	2 1/2	5 3/4	9/16" x 3/4"	24	0	190	0	187
10'-5"	N/R	N/R	344*	N/R	3/8	24	13	2 1/2	5 3/4	10	2 9/16	5 3/4	11	2 1/2	5 3/4	9/16" x 3/4"	24	0	210	0	207
11'-5"	1.5	CP0629	344	12	3/8	18	16	2 1/2	5 3/4	12	2 9/16	5 3/4	13	2 1/2	5 3/4	9/16" x 3/4"	18	105	230	177	233
12'-5"	1.5	CP0629	344	12	3/8	18	16	2 1/2	5 3/4	12	2 9/16	5 3/4	11	2 1/2	5 3/4	9/16" x 3/4"	18	371	250	425	253
13'-5"	1.5	CP0629	344	12	3/8	14	10	2 1/2	5 3/4	8	2 9/16	5 3/4	7	2 1/2	5 3/4	9/16" x 3/4"	18	638	270	680	273
14'-5"	1.5	CP0629	445	12	1/2	18	12	3 1/2	6 13/16	13	4 1/2	6 13/16	9	3 1/2	6 13/16	9/16" x 3/4"	18	859	289	932	296
15'-5"	1.5	CP0629	445	11	1/2	18	11	3 1/2	6 13/16	11	4 1/2	6 13/16	8	3 1/2	6 13/16	9/16" x 3/4"	18	1026	310	1085	316
16'-5"	1.5	CP0630	445	11	1/2	16	9	3 1/2	6 13/16	10	4 1/2	6 13/16	7	3 1/2	6 13/16	9/16" x 3/4"	17	1184	330	1231	336
17'-5"	1.5	CP0630	446	10	5/8	18	12	4	6 7/8	12	4 1/2	6 7/8	10	4	6 7/8	11/16" x 7/8"	17	1316	350	1355	356
18'-5"	1.5	CP0630	446	10	5/8	18	11	4	6 7/8	11	4 1/2	6 7/8	9	4	6 7/8	11/16" x 7/8"	16	1428	370	1461	376
19'-5"	1.5	CP0630	546	9	5/8	18	10	4	6 7/8	10	4 1/2	6 7/8	8	4	6 7/8	11/16" x 7/8"	14	1590	390	1619	396
20'-5"	1.625	CP0630	546	9	5/8	18	10	4	6 7/8	10	4 1/2	6 7/8	8	4	6 7/8	11/16" x 7/8"	14	1613	409	1636	415
21'-5"	1.625	CP0630 & CP0647	548	9	3/4	18	13	4 3/4	7 1/2	9	5	7 1/2	10	5	7 1/2	13/16" x 1"	18	1822	430	1845	436
22'-5"	1.75	CP0630 & CP0647	548	9	3/4	18	13	4 3/4	7 1/2	12	5	7 1/2	10	5	7 1/2	13/16" x 1"	18	1844	450	1863	455
23'-5"	1.875	CP0630 & CP0647	548	9	3/4	18	12	4 3/4	7 1/2	11	5	7 1/2	10	5	7 1/2	13/16" x 1"	18	1876	469	1891	475
24'-5"	2	CP0630 & CP0647	548	8	3/4	18	12	4 3/4	7 1/2	11	5	7 1/2	10	5	7 1/2	13/16" x 1"	18	1915	489	1927	494
25'-5"	2.125	CP0630 & CP0647	548	8	3/4	18	12	4 3/4	7 1/2	11	5	7 1/2	9	5	7 1/2	13/16" x 1"	18	1958	509	1968	513
26'-5"	2.25	CP0630 & CP0647	548	8	3/4	18	11	4 3/4	7 1/2	10	5	7 1/2	9	5	7 1/2	13/16" x 1"	18	2004	528	2012	532
27'-5"	2.375	CP0630 & CP0647	548	8	3/4	18	11	4 3/4	7 1/2	10	5	7 1/2	9	5	7 1/2	13/16" x 1"	18	2052	548	2058	552
28'-5"	2.5	CP0630 & CP0647	648	8	3/4	18	10	4 3/4	7 1/2	10	5	7 1/2	9	5	7 1/2	13/16" x 1"	17	2102	567	2106	571
29'-5"	2.5	CP0630 & CP0647	648	8	3/4	18	9	4 3/4	7 1/2	9	5	7 1/2	N/A	N/A	N/A	13/16" x 1"	16	2245	588	2248	591
30'-5"	2.5	CP0630 & CP0647	648	8	3/4	18	8	4 3/4	7 1/2	9	5	7 1/2	N/A	N/A	N/A	13/16" x 1"	15	2388	608	2391	611
31'-5"	2.5	CP0630 & CP0647	648	7	3/4	17	7	4 3/4	7 1/2	8	5	7 1/2	N/A	N/A	N/A	13/16" x 1"	15	2531	628	2535	632
32'-5"	2.5	CP0630 & CP0647	648	7	3/4	16	6	4 3/4	7 1/2	8	5	7 1/2	N/A	N/A	N/A	13/16" x 1"	14	2676	648	2679	652
33'-5"	2.5	CP0630 & CP0647	648	7	3/4	15	6	4 3/4	7 1/2	7	5	7 1/2	N/A	N/A	N/A	13/16" x 1"	13	2821	669	2825	672
34'-5"	2.5	CP0630 & CP0647	648	6	3/4	15	5	4 3/4	7 1/2	7	5	7 1/2	N/A	N/A	N/A	13/16" x 1"	12	2968	689	2971	693
35'-5"	2.5	CP0630 & CP0647	648	6	3/4	14	5	4 3/4	7 1/2	7	5	7 1/2	N/A	N/A	N/A	13/16" x 1"	12	3115	710	3119	713

- NOTES
 1. N/R - not required
 2. * - non - windlock guide assembly
 3. N/A - not available



CORNELL 101 ELMWOOD AVENUE
 CRESTWOOD INDUSTRIAL PARK
 MOUNTAIN TOP, PA 18077

TITLE: WINDLOCK CONFIGURATIONS, INSULATED ROLLING DOOR

DATE: 12/24/08

BY: D. R. MAGGIO

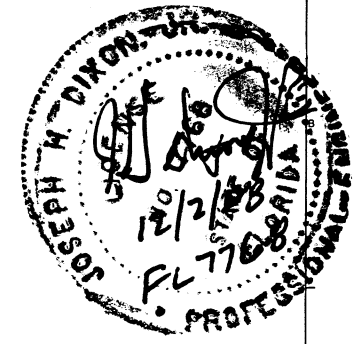
REV: B

SCALE: 1:1 SHEET 11 OF 23

REVISION	DATE	BY	E.C.O.
ORIGINAL ISSUE	10/14/04	R.M.	-
REVISE MASONRY FAST. TO DIM. BOLT 3 AND REVISE POWERS SPACING	09/12/05	R.M.	1214
ADD O.C. EMBEDMENT DEPTH AND EDGE DISTANCE FOR ANCHORS	11/29/06	R.M.	-

22/24 GA. GALVANIZED OR STAINLESS STEEL - 60 P.S.F.																						
TABLE 7	Distance Between Guides (D.B.G.) thru: (FT.-IN.)	Windlock Flat Location on Inner Angle (IN.)	Windlock	Guide Assembly Type	Windlock Flat Weld Pitch Spacing (IN.)	Fastener Diameter (IN.)	Assembly Fastener SAE Gr. 8 Maximum O.C. Spacing (IN.)	Wall Fasteners - Concrete Structure Min 3,000 PSI									Wall fasteners - Steel Structure Min 1/4" fillet weld entire slot perimeter or Gr. 8 bolt		Superimposed Loads POSITIVE (+)		Superimposed Loads NEGATIVE (-)	
								Hilti Kwik Bolt 3			Simpson Wedge-All			Powers Wedge-Bolt			Slot	Maximum O.C. Spacing (IN.)	Vx (LBS.)	Vy (LBS.)	Vx (LBS.)	Vy (LBS.)
								Maximum O.C. Spacing (IN.)	Minimum Embedment (IN.)	Minimum Edge Distance (IN.)	Maximum O.C. Spacing (IN.)	Minimum Embedment (IN.)	Minimum Edge Distance (IN.)	Maximum O.C. Spacing (IN.)	Minimum Embedment (IN.)	Minimum Edge Distance (IN.)						
2'-5"	N/R	N/R	344*	N/R	3/8	24	24	2 1/2	5 3/4	24	2 9/16	5 3/4	24	2 1/2	5 3/4	9/16" x 3/4"	24	0	62	0	58	
3'-5"	N/R	N/R	344*	N/R	3/8	24	24	2 1/2	5 3/4	24	2 9/16	5 3/4	24	2 1/2	5 3/4	9/16" x 3/4"	24	0	87	0	83	
4'-5"	N/R	N/R	344*	N/R	3/8	24	24	2 1/2	5 3/4	18	2 9/16	5 3/4	22	2 1/2	5 3/4	9/16" x 3/4"	24	0	112	0	108	
5'-5"	N/R	N/R	344*	N/R	3/8	24	20	2 1/2	5 3/4	15	2 9/16	5 3/4	18	2 1/2	5 3/4	9/16" x 3/4"	24	0	137	0	133	
6'-5"	N/R	N/R	344*	N/R	3/8	24	17	2 1/2	5 3/4	13	2 9/16	5 3/4	15	2 1/2	5 3/4	9/16" x 3/4"	24	0	162	0	158	
7'-5"	N/R	N/R	344*	N/R	3/8	24	15	2 1/2	5 3/4	11	2 9/16	5 3/4	13	2 1/2	5 3/4	9/16" x 3/4"	24	0	187	0	183	
8'-5"	N/R	N/R	344*	N/R	3/8	24	13	2 1/2	5 3/4	9	2 9/16	5 3/4	11	2 1/2	5 3/4	9/16" x 3/4"	24	0	212	0	208	
9'-5"	N/R	N/R	344*	N/R	3/8	24	12	2 1/2	5 3/4	8	2 9/16	5 3/4	10	2 1/2	5 3/4	9/16" x 3/4"	24	0	237	0	233	
10'-5"	1.5	CP0629	344	12	3/8	18	19	2 1/2	5 3/4	13	2 9/16	5 3/4	13	2 1/2	5 3/4	9/16" x 3/4"	18	202	262	302	266	
11'-5"	1.5	CP0629	344	12	3/8	13	10	2 1/2	5 3/4	7	2 9/16	5 3/4	7	2 1/2	5 3/4	9/16" x 3/4"	18	660	287	737	292	
12'-5"	1.5	CP0629	445	11	1/2	17	10	3 1/2	6 13/16	11	4 1/2	6 13/16	8	3 1/2	6 13/16	9/16" x 3/4"	18	1042	312	1163	321	
13'-5"	1.5	CP0630	446	10	5/8	18	11	4	6 7/8	11	4 1/2	6 7/8	9	4	6 7/8	11/16" x 7/8"	16	1381	338	1478	347	
14'-5"	1.5	CP0630	546	9	5/8	18	9	4	6 7/8	10	4 1/2	6 7/8	8	4	6 7/8	11/16" x 7/8"	13	1677	364	1758	373	
15'-5"	1.5	CP0630 & CP0647	548	8	3/4	18	12	4 3/4	7 1/2	11	5	7 1/2	10	5	7 1/2	13/16" x 1"	18	1945	390	2019	399	
16'-5"	1.5	CP0630 & CP0647	548	8	3/4	18	11	4 3/4	7 1/2	10	5	7 1/2	9	5	7 1/2	13/16" x 1"	17	2190	415	2255	425	
17'-5"	1.5	CP0630 & CP0647	548	7	3/4	18	8	4 3/4	7 1/2	9	5	7 1/2	N/A	N/A	N/A	13/16" x 1"	15	2424	441	2480	450	
18'-5"	1.5	CP0630 & CP0647	648	7	3/4	18	7	4 3/4	7 1/2	8	5	7 1/2	N/A	N/A	N/A	13/16" x 1"	14	2665	466	2716	476	
19'-5"	1.5	CP0630 & CP0647	648	7	3/4	17	6	4 3/4	7 1/2	8	5	7 1/2	N/A	N/A	N/A	13/16" x 1"	13	2953	493	3000	502	
20'-5"	1.5	CP0630 & CP0647	648	7	3/4	16	5	4 3/4	7 1/2	7	5	7 1/2	N/A	N/A	N/A	13/16" x 1"	11	3112	518	3154	527	

22/24 GA. GALVANIZED OR STAINLESS STEEL - 60 P.S.F.																						
TABLE 8	Distance Between Guides (D.B.G.) thru: (FT.-IN.)	Windlock Flat Location on Inner Angle (IN.)	Windlock	Guide Assembly Type	Windlock Flat Weld Pitch Spacing (IN.)	Fastener Diameter (IN.)	Assembly Fastener SAE Gr. 8 Maximum O.C. Spacing (IN.)	Wall Fasteners - Concrete Structure Min 3,000 PSI									Wall fasteners - Steel Structure Min 1/4" fillet weld entire slot perimeter or Gr. 8 bolt		Superimposed Loads POSITIVE (+)		Superimposed Loads NEGATIVE (-)	
								Hilti Kwik Bolt 3			Simpson Wedge-All			Powers Wedge-Bolt			Slot	Maximum O.C. Spacing (IN.)	Vx (LBS.)	Vy (LBS.)	Vx (LBS.)	Vy (LBS.)
								Maximum O.C. Spacing (IN.)	Minimum Embedment (IN.)	Minimum Edge Distance (IN.)	Maximum O.C. Spacing (IN.)	Minimum Embedment (IN.)	Minimum Edge Distance (IN.)	Maximum O.C. Spacing (IN.)	Minimum Embedment (IN.)	Minimum Edge Distance (IN.)						
2'-5"	N/R	N/R	344*	N/R	3/8	24	24	2 1/2	5 3/4	24	2 9/16	5 3/4	24	2 1/2	5 3/4	9/16" x 3/4"	24	0	74	0	70	
3'-5"	N/R	N/R	344*	N/R	3/8	24	24	2 1/2	5 3/4	20	2 9/16	5 3/4	23	2 1/2	5 3/4	9/16" x 3/4"	24	0	104	0	100	
4'-5"	N/R	N/R	344*	N/R	3/8	24	20	2 1/2	5 3/4	15	2 9/16	5 3/4	18	2 1/2	5 3/4	9/16" x 3/4"	24	0	134	0	130	
5'-5"	N/R	N/R	344*	N/R	3/8	24	17	2 1/2	5 3/4	12	2 9/16	5 3/4	15	2 1/2	5 3/4	9/16" x 3/4"	24	0	164	0	160	
6'-5"	N/R	N/R	344*	N/R	3/8	24	14	2 1/2	5 3/4	10	2 9/16	5 3/4	12	2 1/2	5 3/4	9/16" x 3/4"	24	0	194	0	190	
7'-5"	N/R	N/R	344*	N/R	3/8	24	12	2 1/2	5 3/4	9	2 9/16	5 3/4	11	2 1/2	5 3/4	9/16" x 3/4"	24	0	224	0	220	
8'-5"	N/R	N/R	344*	N/R	3/8	24	11	2 1/2	5 3/4	8	2 9/16	5 3/4	9	2 1/2	5 3/4	9/16" x 3/4"	24	0	254	0	250	
9'-5"	1.5	CP0629	344	12	3/8	18	16	2 1/2	5 3/4	11	2 9/16	5 3/4	11	2 1/2	5 3/4	9/16" x 3/4"	18	196	284	338	290	
10'-5"	1.5	CP0629	445	11	1/2	18	10	3 1/2	6 13/16	11	4 1/2	6 13/16	8	3 1/2	6 13/16	9/16" x 3/4"	18	897	315	1104	326	
11'-5"	1.5	CP0630	546	9	5/8	18	10	4	6 7/8	10	4 1/2	6 7/8	8	4	6 7/8	11/16" x 7/8"	14	1589	346	1752	358	
12'-5"	1.5	CP0630 & CP0647	548	7	3/4	18	8	4 3/4	7 1/2	9	5	7 1/2	N/A	N/A	N/A	13/16" x 1"	16	2415	380	2563	393	



NOTES:
 1. N/R - not required
 2. * - non - windlock guide assembly
 3. N/A - not available

CORNELL 100 ELMWOOD AVENUE
 CRESTWOOD INDUSTRIAL PARK
 MOUNTAINTOP, PA 18072

TITLE
 WINDLOCK CONFIGURATIONS
 INSULATED ROLLING DOOR

SIZE DRAWN BY REV
 D R. MAGGIO ES16-23-01 B

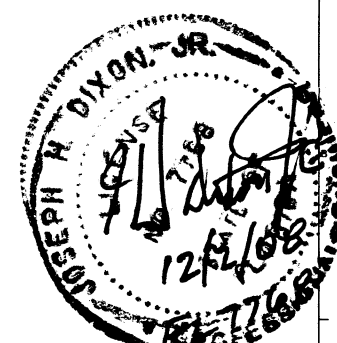
SCALE 1:1 SHEET 12 OF 23

20/24 GA. GALVANIZED OR STAINLESS STEEL - 30 P.S.F.

TABLE	Distance Between Guides (D.B.G.) thru: (FT.-IN.)	Windlock Flat Location on Inner Angle (IN.)	Windlock	Guide Assembly Type	Windlock Flat Weld Pitch Spacing (IN.)	Fastener Diameter (IN.)	Assembly Fastener SAE Gr. 8 Maximum O.C. Spacing (IN.)	Wall Fasteners - Concrete Structure Min 3,000 PSI									Wall fasteners - Steel Structure Min 1/4" fillet weld entire slot perimeter or Gr. 8 bolt		Superimposed Loads POSITIVE (+)		Superimposed Loads NEGATIVE (-)	
								HiTi Kwik Bolt 3			Simpson Wedge-All			Powers Wedge-Bolt			Slot	Maximum O.C. Spacing (IN.)	Vx (LBS.)	Vy (LBS.)	Vx (LBS.)	Vy (LBS.)
								Maximum O.C. Spacing (IN.)	Minimum Embedment (IN.)	Minimum Edge Distance (IN.)	Maximum O.C. Spacing (IN.)	Minimum Embedment (IN.)	Minimum Edge Distance (IN.)	Maximum O.C. Spacing (IN.)	Minimum Embedment (IN.)	Minimum Edge Distance (IN.)						
								24	2 1/2	5 3/4	24	2 9/16	5 3/4	24	2 9/16	5 3/4	24	2 1/2	5 3/4	24	2 1/2	5 3/4
2'-5"	N/R	N/R	344*	N/R	3/8	24	24	2 1/2	5 3/4	24	2 9/16	5 3/4	24	2 1/2	5 3/4	9/16"x3/4"	24	0	37	0	35	
3'-5"	N/R	N/R	344*	N/R	3/8	24	24	2 1/2	5 3/4	24	2 9/16	5 3/4	24	2 1/2	5 3/4	9/16"x3/4"	24	0	52	0	50	
4'-5"	N/R	N/R	344*	N/R	3/8	24	24	2 1/2	5 3/4	24	2 9/16	5 3/4	24	2 1/2	5 3/4	9/16"x3/4"	24	0	67	0	65	
5'-5"	N/R	N/R	344*	N/R	3/8	24	24	2 1/2	5 3/4	24	2 9/16	5 3/4	24	2 1/2	5 3/4	9/16"x3/4"	24	0	82	0	80	
6'-5"	N/R	N/R	344*	N/R	3/8	24	24	2 1/2	5 3/4	21	2 9/16	5 3/4	24	2 1/2	5 3/4	9/16"x3/4"	24	0	97	0	95	
7'-5"	N/R	N/R	344*	N/R	3/8	24	24	2 1/2	5 3/4	18	2 9/16	5 3/4	21	2 1/2	5 3/4	9/16"x3/4"	24	0	112	0	110	
8'-5"	N/R	N/R	344*	N/R	3/8	24	21	2 1/2	5 3/4	16	2 9/16	5 3/4	19	2 1/2	5 3/4	9/16"x3/4"	24	0	127	0	125	
9'-5"	N/R	N/R	344*	N/R	3/8	24	19	2 1/2	5 3/4	14	2 9/16	5 3/4	17	2 1/2	5 3/4	9/16"x3/4"	24	0	142	0	140	
10'-5"	N/R	N/R	344*	N/R	3/8	24	17	2 1/2	5 3/4	13	2 9/16	5 3/4	15	2 1/2	5 3/4	9/16"x3/4"	24	0	157	0	155	
11'-5"	N/R	N/R	344*	N/R	3/8	24	16	2 1/2	5 3/4	12	2 9/16	5 3/4	14	2 1/2	5 3/4	9/16"x3/4"	24	0	172	0	170	
12'-5"	N/R	N/R	344*	N/R	3/8	24	15	2 1/2	5 3/4	11	2 9/16	5 3/4	13	2 1/2	5 3/4	9/16"x3/4"	24	0	187	0	185	
13'-5"	1.5	CP0629	344	12	3/8	18	14	2 1/2	5 3/4	10	2 9/16	5 3/4	12	2 1/2	5 3/4	9/16"x3/4"	18	16	202	45	204	
14'-5"	1.5	CP0629	344	12	3/8	18	18	2 1/2	5 3/4	16	2 9/16	5 3/4	16	2 1/2	5 3/4	9/16"x3/4"	18	150	217	169	219	
15'-5"	1.5	CP0629	344	12	3/8	18	18	2 1/2	5 3/4	16	2 9/16	5 3/4	15	2 1/2	5 3/4	9/16"x3/4"	18	270	232	282	233	
16'-5"	1.5	CP0629	344	12	3/8	17	14	2 1/2	5 3/4	10	2 9/16	5 3/4	10	2 1/2	5 3/4	9/16"x3/4"	18	473	247	483	249	
17'-5"	1.5	CP0629	344	12	3/8	14	10	2 1/2	5 3/4	8	2 9/16	5 3/4	7	2 1/2	5 3/4	9/16"x3/4"	18	663	262	672	264	
18'-5"	2	CP0629	445	12	1/2	18	18	3 1/2	6 13/16	18	4 1/2	6 13/16	15	3 1/2	6 13/16	9/16"x3/4"	18	511	276	526	279	
19'-5"	2	CP0629	445	12	1/2	18	16	3 1/2	6 13/16	17	4 1/2	6 13/16	12	3 1/2	6 13/16	9/16"x3/4"	18	657	291	671	294	
20'-5"	2	CP0629	445	12	1/2	18	13	3 1/2	6 13/16	14	4 1/2	6 13/16	10	3 1/2	6 13/16	9/16"x3/4"	18	798	306	810	309	
21'-5"	2	CP0629	445	12	1/2	18	11	3 1/2	6 13/16	12	4 1/2	6 13/16	9	3 1/2	6 13/16	9/16"x3/4"	18	934	321	944	324	
22'-5"	2	CP0629	445	11	1/2	17	10	3 1/2	6 13/16	11	4 1/2	6 13/16	7	3 1/2	6 13/16	9/16"x3/4"	18	1066	336	1076	339	
23'-5"	2	CP0630	446	10	5/8	18	13	4	6 7/8	13	4 1/2	6 7/8	10	4	6 7/8	11/16"x7/8"	18	1239	351	1249	354	
24'-5"	2	CP0630	446	10	5/8	18	11	4	6 7/8	12	4 1/2	6 7/8	9	4	6 7/8	11/16"x7/8"	16	1370	366	1379	369	
25'-5"	2	CP0630	546	10	5/8	18	11	4	6 7/8	11	4 1/2	6 7/8	8	4	6 7/8	11/16"x7/8"	15	1500	381	1508	384	
26'-5"	2	CP0630	546	9	5/8	18	10	4	6 7/8	10	4 1/2	6 7/8	8	4	6 7/8	11/16"x7/8"	14	1629	396	1637	400	
27'-5"	2	CP0630	546	9	5/8	17	9	4	6 7/8	9	4 1/2	6 7/8	7	4	6 7/8	11/16"x7/8"	13	1758	411	1765	415	
28'-5"	2.5	CP0630	548	9	3/4	18	15	4 3/4	7 1/2	13	5	7 1/2	12	5	7 1/2	13/16"x1"	18	1531	425	1534	428	
29'-5"	2.5	CP0630	548	9	3/4	18	14	4 3/4	7 1/2	13	5	7 1/2	11	5	7 1/2	13/16"x1"	18	1641	440	1644	443	
30'-5"	2.5	CP0630	548	9	3/4	18	13	4 3/4	7 1/2	12	5	7 1/2	10	5	7 1/2	13/16"x1"	18	1751	445	1754	458	
31'-5"	2.5	CP0630	548	9	3/4	18	12	4 3/4	7 1/2	11	5	7 1/2	10	5	7 1/2	13/16"x1"	18	1861	471	1864	473	
32'-5"	2.5	CP0630	548	8	3/4	18	12	4 3/4	7 1/2	11	5	7 1/2	9	5	7 1/2	13/16"x1"	18	1972	486	1975	488	
33'-5"	2.5	CP0630	548	8	3/4	18	11	4 3/4	7 1/2	10	5	7 1/2	9	5	7 1/2	13/16"x1"	18	2083	501	2086	503	
34'-5"	2.5	CP0630	648	8	3/4	18	10	4 3/4	7 1/2	10	5	7 1/2	N/A	N/A	N/A	13/16"x1"	17	2195	516	2198	519	
35'-5"	2.5	CP0630 & CP0647	648	8	3/4	18	9	4 3/4	7 1/2	9	5	7 1/2	N/A	N/A	N/A	13/16"x1"	16	2307	531	2310	534	
36'-5"	2.5	CP0630 & CP0647	648	8	3/4	18	8	4 3/4	7 1/2	9	5	7 1/2	N/A	N/A	N/A	13/16"x1"	15	2420	546	2423	549	
37'-5"	2.5	CP0630 & CP0647	648	7	3/4	17	7	4 3/4	7 1/2	8	5	7 1/2	N/A	N/A	N/A	13/16"x1"	15	2534	562	2537	564	
38'-5"	2.5	CP0630 & CP0647	648	7	3/4	17	7	4 3/4	7 1/2	8	5	7 1/2	N/A	N/A	N/A	13/16"x1"	14	2649	577	2652	579	

- NOTES:
 1. N/R - not required
 2. * - non - windlock guide assembly
 3. N/A - not available

LTR	REVISION	DATE	BY	E.C.O.
-	ORIGINAL ISSUE	10/14/04	R.M.	-
A	REVISE WADRY FAST. TO USE BOLT AND REVISE POWERS SPACING	09/12/05	R.M.	1214
B	ADDED EMBEDMENT DEPTH AND EDGE DISTANCE FOR ANCHORS	11/25/06	R.M.	-



CORNELL 100 ELMWOOD AVENUE, CRESTWOOD INDUSTRIAL PARK, MOUNTAIN TOP, PA 18070

TITLE: WINDLOAD CONFIGURATIONS, INSULATED ROLLING DOOR

SIZE DRAWN: D R. MAGGIO DWG NO: ES16-23-01 REV: B

SCALE: 1:1 SHEET: 13 OF 23

20/24 GA. GALVANIZED OR STAINLESS STEEL - 40 P.S.F.

REV.	REVISION	DATE	BY	E.C.O.
1	ORIGINAL ISSUE	10/14/04	R.M.	-
2	REVISE WINDLOAD FAST. TO PERM. 20/24 AND REVISE POWERS SPACING	09/12/05	R.M.	1214
3	ADD EDGE EMBEDMENT DEPTH AND EDGE DISTANCE FOR ANCHORS	11/29/06	R.M.	-

Distance Between Guides (D.B.G.) thru (FT.-IN.)	Windlock Flat Location on Inner Angle (IN.)	Windlock	Guide Assembly Type	Windlock Flat Weld Pitch Spacing (IN.)	Fastener Diameter (IN.)	Assembly Fastener SAE Gr. & Maximum O.C. Spacing (IN.)	Wall Fasteners - Concrete Structure Min 3,000 PSI									Wall fasteners - Steel Structure Min 1/4" fillet weld entire slot perimeter or Gr. 8 bolt		Superimposed Loads POSITIVE (+)		Superimposed Loads NEGATIVE (-)	
							Hilti Kwik Bolt 3			Simpson Wedge-All			Powers Wedge-Bolt			Slot	Maximum O.C. Spacing (IN.)	Vx (LBS.)	Vy (LBS.)	Vx (LBS.)	Vy (LBS.)
							Maximum O.C. Spacing (IN.)	Minimum Embedment (IN.)	Minimum Edge Distance (IN.)	Maximum O.C. Spacing (IN.)	Minimum Embedment (IN.)	Minimum Edge Distance (IN.)	Maximum O.C. Spacing (IN.)	Minimum Embedment (IN.)	Minimum Edge Distance (IN.)						
							24	2 1/2	5 3/4	24	2 9/16	5 3/4	24	2 1/2	5 3/4	24	2 1/2	5 3/4	9/16" x 3/4"	24	0
3'-5"	N/R	N/R	344*	N/R	3/8	24	24	2 1/2	5 3/4	24	2 9/16	5 3/4	24	2 1/2	5 3/4	9/16" x 3/4"	24	0	70	0	67
4'-5"	N/R	N/R	344*	N/R	3/8	24	24	2 1/2	5 3/4	23	2 9/16	5 3/4	24	2 1/2	5 3/4	9/16" x 3/4"	24	0	90	0	87
5'-5"	N/R	N/R	344*	N/R	3/8	24	24	2 1/2	5 3/4	19	2 9/16	5 3/4	22	2 1/2	5 3/4	9/16" x 3/4"	24	0	110	0	107
6'-5"	N/R	N/R	344*	N/R	3/8	24	21	2 1/2	5 3/4	16	2 9/16	5 3/4	19	2 1/2	5 3/4	9/16" x 3/4"	24	0	130	0	127
7'-5"	N/R	N/R	344*	N/R	3/8	24	18	2 1/2	5 3/4	14	2 9/16	5 3/4	16	2 1/2	5 3/4	9/16" x 3/4"	24	0	150	0	147
8'-5"	N/R	N/R	344*	N/R	3/8	24	16	2 1/2	5 3/4	12	2 9/16	5 3/4	14	2 1/2	5 3/4	9/16" x 3/4"	24	0	170	0	167
9'-5"	N/R	N/R	344*	N/R	3/8	24	14	2 1/2	5 3/4	11	2 9/16	5 3/4	13	2 1/2	5 3/4	9/16" x 3/4"	24	0	190	0	187
10'-5"	N/R	N/R	344*	N/R	3/8	24	13	2 1/2	5 3/4	10	2 9/16	5 3/4	11	2 1/2	5 3/4	9/16" x 3/4"	24	0	210	0	207
11'-5"	N/R	N/R	344*	N/R	3/8	24	12	2 1/2	5 3/4	9	2 9/16	5 3/4	10	2 1/2	5 3/4	9/16" x 3/4"	24	0	230	0	227
12'-5"	1.5	CP0629	344	12	3/8	18	18	2 1/2	5 3/4	15	2 9/16	5 3/4	14	2 1/2	5 3/4	9/16" x 3/4"	18	187	250	229	252
13'-5"	1.5	CP0629	344	12	3/8	18	17	2 1/2	5 3/4	13	2 9/16	5 3/4	12	2 1/2	5 3/4	9/16" x 3/4"	18	350	269	380	272
14'-5"	1.5	CP0629	344	12	3/8	16	13	2 1/2	5 3/4	10	2 9/16	5 3/4	9	2 1/2	5 3/4	9/16" x 3/4"	18	480	289	498	292
15'-5"	1.5	CP0629	344	12	3/8	13	10	2 1/2	5 3/4	8	2 9/16	5 3/4	7	2 1/2	5 3/4	9/16" x 3/4"	18	632	309	645	311
16'-5"	1.625	CP0629	445	12	1/2	18	14	3 1/2	6 13/16	15	4 1/2	6 13/16	10	3 1/2	6 13/16	9/16" x 3/4"	18	748	328	780	333
17'-5"	1.875	CP0629	445	12	1/2	18	13	3 1/2	6 13/16	14	4 1/2	6 13/16	10	3 1/2	6 13/16	9/16" x 3/4"	18	765	348	786	352
18'-5"	2	CP0629	445	12	1/2	18	12	3 1/2	6 13/16	12	4 1/2	6 13/16	9	3 1/2	6 13/16	9/16" x 3/4"	18	872	368	888	371
19'-5"	2	CP0629	445	11	1/2	16	10	3 1/2	6 13/16	11	4 1/2	6 13/16	8	3 1/2	6 13/16	9/16" x 3/4"	18	1048	387	1062	392
20'-5"	2	CP0630	446	10	5/8	18	12	4	6 7/8	12	4 1/2	6 7/8	10	4	6 7/8	11/16" x 7/8"	18	1265	408	1279	412
21'-5"	2	CP0630	546	10	5/8	18	11	4	6 7/8	11	4 1/2	6 7/8	9	4	6 7/8	11/16" x 7/8"	16	1436	428	1448	432
22'-5"	2	CP0630	546	9	5/8	18	10	4	6 7/8	10	4 1/2	6 7/8	8	4	6 7/8	11/16" x 7/8"	14	1604	448	1615	452
23'-5"	2.5	CP0630	548	10	3/4	18	16	4 3/4	7 1/2	14	5	7 1/2	13	5	7 1/2	13/16" x 1"	18	1415	467	1420	470
24'-5"	2.5	CP0630	548	9	3/4	18	14	4 3/4	7 1/2	13	5	7 1/2	11	5	7 1/2	13/16" x 1"	18	1557	487	1561	490
25'-5"	2.5	CP0630	548	9	3/4	18	13	4 3/4	7 1/2	12	5	7 1/2	11	5	7 1/2	13/16" x 1"	18	1698	507	1703	510
26'-5"	2.5	CP0630	548	9	3/4	18	12	4 3/4	7 1/2	11	5	7 1/2	10	5	7 1/2	13/16" x 1"	18	1839	527	1843	530
27'-5"	2.5	CP0630	548	8	3/4	18	11	4 3/4	7 1/2	10	5	7 1/2	9	5	7 1/2	13/16" x 1"	18	1980	547	1984	550
28'-5"	2.5	CP0630	648	8	3/4	18	10	4 3/4	7 1/2	10	5	7 1/2	9	5	7 1/2	13/16" x 1"	17	2121	567	2125	571
29'-5"	2.5	CP0630 & CP0647	648	8	3/4	18	9	4 3/4	7 1/2	9	5	7 1/2	N/A	N/A	N/A	13/16" x 1"	16	2262	587	2266	591
30'-5"	2.5	CP0630 & CP0647	648	8	3/4	18	8	4 3/4	7 1/2	9	5	7 1/2	N/A	N/A	N/A	13/16" x 1"	15	2404	608	2408	611
31'-5"	2.5	CP0630 & CP0647	648	7	3/4	17	7	4 3/4	7 1/2	8	5	7 1/2	N/A	N/A	N/A	13/16" x 1"	14	2547	628	2550	631
32'-5"	2.5	CP0630 & CP0647	648	7	3/4	16	6	4 3/4	7 1/2	8	5	7 1/2	N/A	N/A	N/A	13/16" x 1"	14	2690	648	2694	652
33'-5"	2.5	CP0630 & CP0647	648	7	3/4	15	6	4 3/4	7 1/2	7	5	7 1/2	N/A	N/A	N/A	13/16" x 1"	13	2835	668	2838	672
34'-5"	2.5	CP0630 & CP0647	648	7	3/4	15	5	4 3/4	7 1/2	7	5	7 1/2	N/A	N/A	N/A	13/16" x 1"	12	2981	689	2984	692
35'-5"	2.5	CP0630 & CP0647	648	7	3/4	14	5	4 3/4	7 1/2	7	5	7 1/2	N/A	N/A	N/A	13/16" x 1"	12	3127	709	3131	713

- NOTES:
 1. N/R - not required
 2. * - non - windlock guide assembly
 3. N/A - not available



CORNELL 100 ELMWOOD AVENUE
 CRESTWOOD INDUSTRIAL PARK
 MOUNTAINTOP, PA 18707

TITLE
**WINDLOAD CONFIGURATIONS,
 INSULATED ROLLING DOOR**

SIZE DRAWN: D R. MAGGIO
 DESIGNED: R.M.
 REVISED: R.M.

NO. ES16-23-01

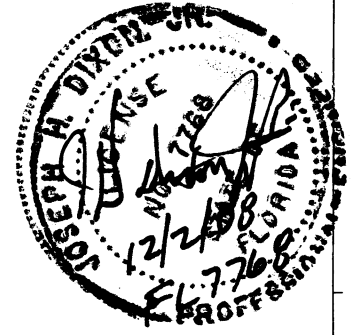
SCALE: 1:1 SHEET 14 OF 23

20/24 GA. GALVANIZED OR STAINLESS STEEL - 50 P.S.F.

L/TR	REVISION	DATE	BY	E.C.O.
1	ORIGINAL DESIG.	10/14/04	R.M.	-
2	REVISE WINDLOCK FLAT TO BEH. BOLT AND INCREASE POWERS BRACE	08/19/08	R.M.	1214
3	ADD TO EMBEDMENT DEPTH AND EDGE DISTANCE FOR ANCHORS	11/25/08	R.M.	-

Distance Between Guides (D.B.G.) thru (FT.-IN.)	Windlock Flat Location on Inner Angle (IN.)	Windlock	Guide Assembly Type	Windlock Flat Weld Pitch Spacing (IN.)	Fastener Diameter (IN.)	Assembly Fastener SAE Gr. 8 Maximum O.C. Spacing (IN.)	Wall Fasteners - Concrete Structure Min 3,000 PSI									Wall Fasteners - Steel Structure Min 1/4" fillet weld entire slot perimeter or Gr. 8 bolt		Superimposed Loads POSITIVE (+)		Superimposed Loads NEGATIVE (-)	
							HiTi Kwik Bolt 3			Simpson Wedge-All			Powers Wedge-Bolt			Slot	Maximum O.C. Spacing (IN.)	Vx (LBS.)	Vy (LBS.)	Vx (LBS.)	Vy (LBS.)
							Maximum O.C. Spacing (IN.)	Minimum Embedment (IN.)	Minimum Edge Distance (IN.)	Maximum O.C. Spacing (IN.)	Minimum Embedment (IN.)	Minimum Edge Distance (IN.)	Maximum O.C. Spacing (IN.)	Minimum Embedment (IN.)	Minimum Edge Distance (IN.)						
							24	2 1/2	5 3/4	24	2 9/16	5 3/4	24	2 1/2	5 3/4	9/16" x 3/4"	24	0	62	0	58
3'-5"	N/R	N/R	344*	N/R	3/8	24	24	2 1/2	5 3/4	24	2 9/16	5 3/4	24	2 1/2	5 3/4	9/16" x 3/4"	24	0	87	0	83
4'-5"	N/R	N/R	344*	N/R	3/8	24	24	2 1/2	5 3/4	18	2 9/16	5 3/4	22	2 1/2	5 3/4	9/16" x 3/4"	24	0	112	0	108
5'-5"	N/R	N/R	344*	N/R	3/8	24	20	2 1/2	5 3/4	15	2 9/16	5 3/4	18	2 1/2	5 3/4	9/16" x 3/4"	24	0	137	0	133
6'-5"	N/R	N/R	344*	N/R	3/8	24	17	2 1/2	5 3/4	13	2 9/16	5 3/4	15	2 1/2	5 3/4	9/16" x 3/4"	24	0	162	0	158
7'-5"	N/R	N/R	344*	N/R	3/8	24	15	2 1/2	5 3/4	11	2 9/16	5 3/4	13	2 1/2	5 3/4	9/16" x 3/4"	24	0	187	0	183
8'-5"	N/R	N/R	344*	N/R	3/8	24	13	2 1/2	5 3/4	9	2 9/16	5 3/4	11	2 1/2	5 3/4	9/16" x 3/4"	24	0	212	0	208
9'-5"	N/R	N/R	344*	N/R	3/8	24	12	2 1/2	5 3/4	8	2 9/16	5 3/4	10	2 1/2	5 3/4	9/16" x 3/4"	24	0	237	0	233
10'-5"	1.5	CP0629	344	12	3/8	18	11	2 1/2	5 3/4	8	2 9/16	5 3/4	9	2 1/2	5 3/4	9/16" x 3/4"	18	40	262	126	266
11'-5"	1.5	CP0629	344	12	3/8	18	17	2 1/2	5 3/4	13	2 9/16	5 3/4	12	2 1/2	5 3/4	9/16" x 3/4"	18	308	287	369	291
12'-5"	1.5	CP0629	344	12	3/8	15	12	2 1/2	5 3/4	9	2 9/16	5 3/4	8	2 1/2	5 3/4	9/16" x 3/4"	18	511	312	554	316
13'-5"	1.5	CP0629	344	12	3/8	13	10	2 1/2	5 3/4	7	2 9/16	5 3/4	7	2 1/2	5 3/4	9/16" x 3/4"	18	689	337	698	340
14'-5"	1.5	CP0629	445	12	1/2	18	12	3 1/2	6 13/16	13	4 1/2	6 13/16	9	3 1/2	6 13/16	9/16" x 3/4"	18	830	361	887	368
15'-5"	1.5	CP0629	445	11	1/2	17	11	3 1/2	6 13/16	11	4 1/2	6 13/16	8	3 1/2	6 13/16	9/16" x 3/4"	18	997	386	1042	393
16'-5"	1.625	CP0629	445	11	1/2	15	10	3 1/2	6 13/16	10	4 1/2	6 13/16	7	3 1/2	6 13/16	9/16" x 3/4"	18	1116	411	1150	417
17'-5"	1.75	CP0630	446	10	5/8	18	12	4	6 7/8	12	4 1/2	6 7/8	9	4	6 7/8	11/16" x 7/8"	17	1295	436	1322	442
18'-5"	1.875	CP0630	546	10	5/8	18	11	4	6 7/8	11	4 1/2	6 7/8	9	4	6 7/8	11/16" x 7/8"	16	1396	460	1416	466
19'-5"	2	CP0630	546	10	5/8	18	10	4	6 7/8	10	4 1/2	6 7/8	8	4	6 7/8	11/16" x 7/8"	15	1493	485	1509	490
20'-5"	2	CP0630	546	9	5/8	17	9	4	6 7/8	9	4 1/2	6 7/8	7	4	6 7/8	11/16" x 7/8"	13	1898	510	1713	515
21'-5"	2.375	CP0630	548	9	3/4	18	14	4 3/4	7 1/2	13	5	7 1/2	11	5	7 1/2	13/16" x 1"	18	1592	534	1600	538
22'-5"	2.5	CP0630	548	9	3/4	18	13	4 3/4	7 1/2	12	5	7 1/2	11	5	7 1/2	13/16" x 1"	18	1685	559	1690	562
23'-5"	2.5	CP0630	548	9	3/4	18	12	4 3/4	7 1/2	11	5	7 1/2	10	5	7 1/2	13/16" x 1"	18	1856	584	1861	588
24'-5"	2.5	CP0630	648	8	3/4	18	11	4 3/4	7 1/2	10	5	7 1/2	9	5	7 1/2	13/16" x 1"	18	2027	609	2032	613
25'-5"	2.5	CP0630 & CP0647	648	8	3/4	18	9	4 3/4	7 1/2	9	5	7 1/2	N/A	N/A	N/A	13/16" x 1"	17	2197	634	2202	638
26'-5"	2.5	CP0630 & CP0647	648	8	3/4	17	8	4 3/4	7 1/2	9	5	7 1/2	N/A	N/A	N/A	13/16" x 1"	15	2368	659	2372	663
27'-5"	2.5	CP0630 & CP0647	648	7	3/4	16	7	4 3/4	7 1/2	8	5	7 1/2	N/A	N/A	N/A	13/16" x 1"	14	2539	684	2543	688
28'-5"	2.5	CP0630 & CP0647	648	7	3/4	16	6	4 3/4	7 1/2	7	5	7 1/2	N/A	N/A	N/A	13/16" x 1"	14	2711	710	2715	714
29'-5"	2.5	CP0630 & CP0647	648	7	3/4	15	5	4 3/4	7 1/2	7	5	7 1/2	N/A	N/A	N/A	13/16" x 1"	13	2883	735	2887	739

- NOTES:
 1. N/R - not required
 2. * - non - windlock guide assembly
 3. N/A - not available



CORNELL
 100 ELMWOOD AVENUE
 CRESTWOOD INDUSTRIAL PARK
 MOUNTAIN TOP, PA 18070

TITLE
 WINDLOCK CONFIGURATIONS,
 INSULATED ROLLING DOOR

SIZE DRAWN DWG NO
 D R. MAGGIO ES16-23-01

SCALE SHEET 15 OF 23

REV	REVISION	DATE	BY	E.C.O.
1	ORIGINAL ISSUE	10/14/04	R.M.	-
A	REUSE LADDERY FAST. TO BE 1/8" BOLT 1/4" LONG FOR USE DRAGS	08/12/05	R.M.	1214
B	ADDED FLOORING DEPTH AND EDGE DISTANCE FOR ANCHORS	11/29/08	R.M.	-

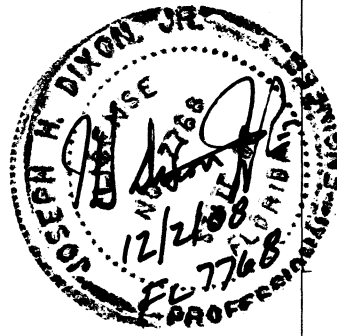
20/24 GA. GALVANIZED OR STAINLESS STEEL - 60 P.S.F.

TABLE 12 Distance Between Guides (D.B.G.) thru (FT.-IN.)	Windlock Flat Location on Inner Angle (IN.)	Windlock	Guide Assembly Type	Windlock Flat Weld Pitch Spacing (IN.)	Fastener Diameter (IN.)	Assembly Fastener SAE Gr. 8 Maximum O.C. Spacing (IN.)	Wall Fasteners - Concrete Structure Min 3,000 PSI									Wall fasteners - Steel Structure Min 1/4" fillet weld entire slot perimeter or Gr. 8 bolt		Superimposed Loads POSITIVE (+)		Superimposed Loads NEGATIVE (-)	
							Hilti Kwik Bolt 3			Simpson Wedge-All			Powers Wedge-Bolt			Slot	Maximum O.C. Spacing (IN.)	Vx (LBS.)	Vy (LBS.)	Vx (LBS.)	Vy (LBS.)
							Maximum O.C. Spacing (IN.)	Minimum Embedment (IN.)	Minimum Edge Distance (IN.)	Maximum O.C. Spacing (IN.)	Minimum Embedment (IN.)	Minimum Edge Distance (IN.)	Maximum O.C. Spacing (IN.)	Minimum Embedment (IN.)	Minimum Edge Distance (IN.)						
							24	24	24	24	24	24	24	24	24	24	24	24	24	24	24
2'-5"	N/R	N/R	344*	N/R	3/8	24	24	2 1/2	5 3/4	24	2 9/16	5 3/4	24	2 1/2	5 3/4	9/16" x 3/4"	24	0	74	0	70
3'-5"	N/R	N/R	344*	N/R	3/8	24	24	2 1/2	5 3/4	20	2 9/16	5 3/4	23	2 1/2	5 3/4	9/16" x 3/4"	24	0	104	0	100
4'-5"	N/R	N/R	344*	N/R	3/8	24	20	2 1/2	5 3/4	15	2 9/16	5 3/4	18	2 1/2	5 3/4	9/16" x 3/4"	24	0	134	0	130
5'-5"	N/R	N/R	344*	N/R	3/8	24	17	2 1/2	5 3/4	12	2 9/16	5 3/4	15	2 1/2	5 3/4	9/16" x 3/4"	24	0	164	0	160
6'-5"	N/R	N/R	344*	N/R	3/8	24	14	2 1/2	5 3/4	10	2 9/16	5 3/4	12	2 1/2	5 3/4	9/16" x 3/4"	24	0	194	0	190
7'-5"	N/R	N/R	344*	N/R	3/8	24	12	2 1/2	5 3/4	9	2 9/16	5 3/4	11	2 1/2	5 3/4	9/16" x 3/4"	24	0	224	0	220
8'-5"	N/R	N/R	344*	N/R	3/8	24	11	2 1/2	5 3/4	8	2 9/16	5 3/4	9	2 1/2	5 3/4	9/16" x 3/4"	24	0	254	0	250
9'-5"	N/R	N/R	344*	N/R	3/8	24	10	2 1/2	5 3/4	7	2 9/16	5 3/4	8	2 1/2	5 3/4	9/16" x 3/4"	18	0	284	0	280
10'-5"	1.5	CP0629	344	12	3/8	18	14	2 1/2	5 3/4	11	2 9/16	5 3/4	10	2 1/2	5 3/4	9/16" x 3/4"	18	362	314	449	320
11'-5"	1.5	CP0629	344	12	3/8	13	10	2 1/2	5 3/4	7	2 9/16	5 3/4	7	2 1/2	5 3/4	9/16" x 3/4"	18	621	345	683	350
12'-5" DC	1.312	CP0629	344	12	1/2	18	14 1/2	3 1/2	5 3/4	13	3 3/8	5 3/4	N/A	N/A	N/A	9/16" x 3/4"	18	685	374	685	378
13'-5"	1.5	CP0630	445	11	1/2	15	9	3 1/2	6 13/16	10	4 1/2	6 13/16	7	3 1/2	6 13/16	9/16" x 3/4"	18	1130	404	1207	413
14'-5"	1.5	CP0630	446	10	5/8	18	11	4	6 7/8	12	4 1/2	6 7/8	9	4	6 7/8	11/16" x 7/8"	17	1342	434	1403	443
15'-5"	1.5	CP0630	546	9	5/8	18	10	4	6 7/8	10	4 1/2	6 7/8	8	4	6 7/8	11/16" x 7/8"	15	1516	464	1565	473
16'-5"	1.5	CP0630	546	9	5/8	17	8	4	6 7/8	9	4 1/2	6 7/8	7	4	6 7/8	11/16" x 7/8"	13	1788	494	1830	503
17'-5"	1.625	CP0630	548	8	3/4	18	12	4 3/4	7 1/2	11	5	7 1/2	10	5	7 1/2	13/16" x 1"	18	1874	524	1911	533
18'-5"	1.75	CP0630	548	8	3/4	18	12	4 3/4	7 1/2	11	5	7 1/2	9	5	7 1/2	13/16" x 1"	18	1959	554	1989	562
19'-5"	1.875	CP0630	548	8	3/4	18	11	4 3/4	7 1/2	10	5	7 1/2	9	5	7 1/2	13/16" x 1"	18	2048	583	2071	591
20'-5"	2	CP0630	548	8	3/4	18	10	4 3/4	7 1/2	10	5	7 1/2	9	5	7 1/2	13/16" x 1"	17	2138	613	2156	620
21'-5"	2.25	CP0630	648	8	3/4	18	10	4 3/4	7 1/2	9	5	7 1/2	9	5	7 1/2	13/16" x 1"	17	2104	642	2115	648
22'-5"	2.375	CP0630 & CP0647	648	8	3/4	18	9	4 3/4	7 1/2	9	5	7 1/2	N/A	N/A	N/A	13/16" x 1"	17	2202	671	2210	676
23'-5"	2.5	CP0630 & CP0647	648	8	3/4	18	8	4 3/4	7 1/2	9	5	7 1/2	N/A	N/A	N/A	13/16" x 1"	16	2298	700	2303	705
24'-5"	2.5	CP0630 & CP0647	648	7	3/4	16	7	4 3/4	7 1/2	8	5	7 1/2	N/A	N/A	N/A	13/16" x 1"	15	2497	731	2502	736
25'-5"	2.5	CP0630 & CP0647	648	7	3/4	15	6	4 3/4	7 1/2	7	5	7 1/2	N/A	N/A	N/A	13/16" x 1"	14	2697	761	2702	766
26'-5"	2.5	CP0630 & CP0647	648	7	3/4	14	5	4 3/4	7 1/2	7	5	7 1/2	N/A	N/A	N/A	13/16" x 1"	13	2897	791	2902	796

20/24 GA. GALVANIZED OR STAINLESS STEEL - 120 P.S.F.

TABLE 13 Distance Between Guides (D.B.G.) thru (FT.-IN.)	Windlock Flat Location on Inner Angle (IN.)	Windlock	Guide Assembly Type	Windlock Flat Weld Pitch Spacing (IN.)	Fastener Diameter (IN.)	Assembly Fastener SAE Gr. 8 Maximum O.C. Spacing (IN.)	Wall Fasteners - Concrete Structure Min 3,000 PSI									Wall fasteners - Steel Structure (See note 5)		Superimposed Loads POSITIVE (+)		Superimposed Loads NEGATIVE (-)	
							Hilti Kwik Bolt 3			Simpson Wedge-All			Powers Wedge-Bolt			Slot	Maximum O.C. Spacing (IN.)	Vx (LBS.)	Vy (LBS.)	Vx (LBS.)	Vy (LBS.)
							Maximum O.C. Spacing (IN.)	Minimum Embedment (IN.)	Minimum Edge Distance (IN.)	Maximum O.C. Spacing (IN.)	Minimum Embedment (IN.)	Minimum Edge Distance (IN.)	Maximum O.C. Spacing (IN.)	Minimum Embedment (IN.)	Minimum Edge Distance (IN.)						
							17	17	17	17	17	17	17	17	17	17	17	17	17	17	17
14'-5" DC	1.5	CP0630 & CP0647	548	7	3/4	17	11	4 3/4	7 1/2	9 1/2	5	7 1/2	N/A	N/A	N/A	13/16" x 1"	10	3223	871	3298	890

- NOTES:
- DC - Dade County Construction
 - N/R - not required
 - * - non - windlock guide assembly
 - N/A - not available
 - 1/4" Fillet weld entire perimeter of slot and 4" long at toe of wall angle or SAE Grade 8 bolt



CORNELL 100 ELMWOOD AVENUE
CRESTWOOD INDUSTRIAL PARK
MOUNTAIN TOP, PA 18070

TITLE
WINDLOAD CONFIGURATIONS,
INSULATED ROLLING DOOR

SIZE DRAWN DWG NO. REV
D R. MAGGIO ES16-23-01 B

SCALE 1:1 SHEET 16 OF 23

18/24 GA. GALVANIZED OR STAINLESS STEEL - 30 P.S.F.

REV	REVISION	DATE	BY	E.C.O.
1	ORIGINAL ISSUE	10/14/04	R.M.	
2	REVISE MASONRY FAST TO PERM BOLT 3 AND REVISE POWERS SPACING	06/12/05	R.M.	1214
3	ADDED EMBEDMENT DEPTH AND EDGE DISTANCE FOR ANCHORS	11/25/08	R.M.	

TABLE 14	Distance Between Guides (D.B.G.) thru (FT. - IN.)	Windlock Flat Location on Inner Angle (IN.)	Windlock	Guide Assembly Type	Windlock Flat Weld Pitch Spacing (IN.)	Fastener Diameter (IN.)	Assembly Fastener SAE Gr. 8 Maximum O.C. Spacing (IN.)	Wall Fasteners - Concrete Structure Min 3,000 PSI									Wall Fasteners - Steel Structure Min 1/4" fillet weld entire slot perimeter or Gr. 8 bolt		Superimposed Loads POSITIVE (+)		Superimposed Loads NEGATIVE (-)	
								Hilti Kwik Bolt 3			Simpson Wedge-All			Powers Wedge-Bolt			Slot	Maximum O.C. Spacing (IN.)	Vx (LBS.)	Vy (LBS.)	Vx (LBS.)	Vy (LBS.)
								Maximum O.C. Spacing (IN.)	Minimum Embedment (IN.)	Minimum Edge Distance (IN.)	Maximum O.C. Spacing (IN.)	Minimum Embedment (IN.)	Minimum Edge Distance (IN.)	Maximum O.C. Spacing (IN.)	Minimum Embedment (IN.)	Minimum Edge Distance (IN.)						
								24	2 1/2	5 3/4	24	2 9/16	5 3/4	24	2 1/2	5 3/4	24	2 1/2	5 3/4	9/16" x 3/4"	24	0
3'-5"	N/R	N/R	344*	N/R	3/8	24	24	2 1/2	5 3/4	24	2 9/16	5 3/4	24	2 1/2	5 3/4	9/16" x 3/4"	24	0	52	0	50	
4'-5"	N/R	N/R	344*	N/R	3/8	24	24	2 1/2	5 3/4	24	2 9/16	5 3/4	24	2 1/2	5 3/4	9/16" x 3/4"	24	0	67	0	65	
5'-5"	N/R	N/R	344*	N/R	3/8	24	24	2 1/2	5 3/4	24	2 9/16	5 3/4	24	2 1/2	5 3/4	9/16" x 3/4"	24	0	82	0	80	
6'-5"	N/R	N/R	344*	N/R	3/8	24	24	2 1/2	5 3/4	21	2 9/16	5 3/4	24	2 1/2	5 3/4	9/16" x 3/4"	24	0	97	0	95	
7'-5"	N/R	N/R	344*	N/R	3/8	24	24	2 1/2	5 3/4	18	2 9/16	5 3/4	21	2 1/2	5 3/4	9/16" x 3/4"	24	0	112	0	110	
8'-5"	N/R	N/R	344*	N/R	3/8	24	21	2 1/2	5 3/4	16	2 9/16	5 3/4	19	2 1/2	5 3/4	9/16" x 3/4"	24	0	127	0	125	
9'-5"	N/R	N/R	344*	N/R	3/8	24	19	2 1/2	5 3/4	14	2 9/16	5 3/4	17	2 1/2	5 3/4	9/16" x 3/4"	24	0	142	0	140	
10'-5"	N/R	N/R	344*	N/R	3/8	24	17	2 1/2	5 3/4	13	2 9/16	5 3/4	15	2 1/2	5 3/4	9/16" x 3/4"	24	0	157	0	155	
11'-5"	N/R	N/R	344*	N/R	3/8	24	16	2 1/2	5 3/4	12	2 9/16	5 3/4	14	2 1/2	5 3/4	9/16" x 3/4"	24	0	172	0	170	
12'-5"	N/R	N/R	344*	N/R	3/8	24	15	2 1/2	5 3/4	11	2 9/16	5 3/4	13	2 1/2	5 3/4	9/16" x 3/4"	24	0	187	0	185	
13'-5"	N/R	N/R	344*	N/R	3/8	24	14	2 1/2	5 3/4	10	2 9/16	5 3/4	12	2 1/2	5 3/4	9/16" x 3/4"	24	0	202	0	200	
14'-5"	1.5	CP0629	344	12	3/8	18	14	2 1/2	5 3/4	10	2 9/16	5 3/4	12	2 1/2	5 3/4	9/16" x 3/4"	18	44	217	91	219	
15'-5"	1.5	CP0629	344	12	3/8	18	18	2 1/2	5 3/4	19	2 9/16	5 3/4	17	2 1/2	5 3/4	9/16" x 3/4"	18	216	232	252	234	
16'-5"	1.5	CP0629	344	12	3/8	18	17	2 1/2	5 3/4	13	2 9/16	5 3/4	12	2 1/2	5 3/4	9/16" x 3/4"	18	357	247	383	249	
17'-5"	1.5	CP0629	344	12	3/8	17	14	2 1/2	5 3/4	10	2 9/16	5 3/4	9	2 1/2	5 3/4	9/16" x 3/4"	18	472	262	492	264	
18'-5"	1.5	CP0629	344	12	3/8	15	12	2 1/2	5 3/4	9	2 9/16	5 3/4	8	2 1/2	5 3/4	9/16" x 3/4"	18	571	277	585	279	
19'-5"	1.5	CP0629	445	12	1/2	18	15	3 1/2	6 13/16	15	4 1/2	6 13/16	11	3 1/2	6 13/16	9/16" x 3/4"	18	713	292	747	296	
20'-5"	1.625	CP0629	445	12	1/2	18	13	3 1/2	6 13/16	14	4 1/2	6 13/16	10	3 1/2	6 13/16	9/16" x 3/4"	18	782	306	809	310	
21'-5"	1.75	CP0629	445	12	1/2	18	12	3 1/2	6 13/16	13	4 1/2	6 13/16	9	3 1/2	6 13/16	9/16" x 3/4"	18	852	321	873	325	
22'-5"	2	CP0629	445	12	1/2	18	12	3 1/2	6 13/16	13	4 1/2	6 13/16	9	3 1/2	6 13/16	9/16" x 3/4"	18	838	336	852	339	
23'-5"	2	CP0629	445	12	1/2	17	11	3 1/2	6 13/16	11	4 1/2	6 13/16	8	3 1/2	6 13/16	9/16" x 3/4"	18	987	351	1000	354	
24'-5"	2	CP0629	445	11	1/2	15	10	3 1/2	6 13/16	10	4 1/2	6 13/16	7	3 1/2	6 13/16	9/16" x 3/4"	18	1132	366	1144	369	
25'-5"	2	CP0630	446	10	5/8	18	12	4	6 7/8	12	4 1/2	6 7/8	9	4	6 7/8	11/16" x 7/8"	17	1322	381	1334	384	
26'-5"	2	CP0630	546	10	5/8	18	11	4	6 7/8	11	4 1/2	6 7/8	9	4	6 7/8	11/16" x 7/8"	15	1465	396	1475	399	
27'-5"	2	CP0630	546	9	5/8	18	10	4	6 7/8	10	4 1/2	6 7/8	8	4	6 7/8	11/16" x 7/8"	14	1605	411	1615	414	
28'-5"	2	CP0630	546	9	5/8	17	9	4	6 7/8	9	4 1/2	6 7/8	7	4	6 7/8	11/16" x 7/8"	13	1744	426	1754	430	
29'-5"	2.5	CP0630	548	10	3/4	18	15	4 3/4	7 1/2	14	5	7 1/2	12	5	7 1/2	13/16" x 1"	18	1509	440	1513	443	
30'-5"	2.5	CP0630	548	9	3/4	18	14	4 3/4	7 1/2	13	5	7 1/2	11	5	7 1/2	13/16" x 1"	18	1628	455	1632	458	
31'-5"	2.5	CP0630	548	9	3/4	18	13	4 3/4	7 1/2	12	5	7 1/2	10	5	7 1/2	13/16" x 1"	18	1746	470	1750	473	
32'-5"	2.5	CP0630	548	9	3/4	18	12	4 3/4	7 1/2	11	5	7 1/2	10	5	7 1/2	13/16" x 1"	18	1864	485	1867	488	
33'-5"	2.5	CP0630	548	8	3/4	18	11	4 3/4	7 1/2	10	5	7 1/2	9	5	7 1/2	13/16" x 1"	18	1981	501	1985	503	
34'-5"	2.5	CP0630	548	8	3/4	18	11	4 3/4	7 1/2	10	5	7 1/2	9	5	7 1/2	13/16" x 1"	18	2099	516	2102	518	
35'-5"	2.5	CP0630 & CP0647	648	8	3/4	18	9	4 3/4	7 1/2	9	5	7 1/2	N/A	N/A	N/A	13/16" x 1"	17	2217	531	2220	533	
36'-5"	2.5	CP0630 & CP0647	648	8	3/4	18	8	4 3/4	7 1/2	9	5	7 1/2	N/A	N/A	N/A	13/16" x 1"	16	2335	546	2338	549	
37'-5"	2.5	CP0630 & CP0647	648	7	3/4	18	8	4 3/4	7 1/2	8	5	7 1/2	N/A	N/A	N/A	13/16" x 1"	15	2453	561	2456	564	
38'-5"	2.5	CP0630 & CP0647	648	7	3/4	17	7	4 3/4	7 1/2	8	5	7 1/2	N/A	N/A	N/A	13/16" x 1"	14	2572	576	2575	579	

NOTES:
 1. N/R - not required
 2. * - non - windlock guide assembly
 3. N/A - not available



CORNELL 100 ELMWOOD AVENUE
 CRESTWOOD INDUSTRIAL PARK
 MOUNTAIN TOP, PA 18071

TITLE
 WINDLOCK CONFIGURATIONS,
 INSULATED ROLLING DOOR

SIZE DRAWN DWG NO
 D. R. MAGGIO ES16-23-01

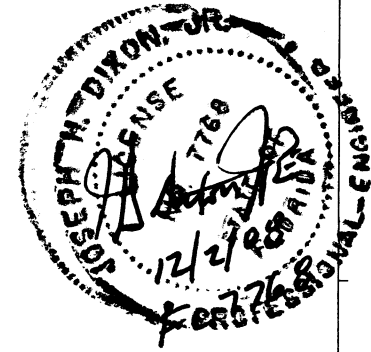
SCALE SHEET 17 OF 23

18/24 GA. GALVANIZED OR STAINLESS STEEL - 40 P.S.F.

REV	REVISION	DATE	BY	E.C.O.
1	ORIGINAL ISSUE	10/14/04	R.M.	-
2	REVISE WINDLOAD FIRST, TO INCLUDE BOLT AND REVISE POWERS SPACING	09/12/05	R.M.	1214
3	ADD TO EMBEDMENT DEPTH AND EDGE DISTANCE FOR ANCHORS	11/29/06	R.M.	-

Distance Between Guides (D.B.G.) thru (FT.- IN.)	Windlock Flat Location on Inner Angle (IN.)	Windlock	Guide Assembly Type	Windlock Flat Weld Pitch Spacing (IN.)	Fastener Diameter (IN.)	Assembly Fastener SAE Gr. 8 Maximum O.C. Spacing (IN.)	Wall Fasteners - Concrete Structure Min 3,000 PSI									Wall fasteners - Steel Structure Min 1/4" fillet weld entire slot perimeter or Gr. 8 bolt		Superimposed Loads POSITIVE (+)		Superimposed Loads NEGATIVE (-)	
							HiKi Kwik Bolt 3			Simpson Wedge-All			Powers Wedge-Bolt			Slot	Maximum O.C. Spacing (IN.)	Vx (LBS.)	Vy (LBS.)	Vx (LBS.)	Vy (LBS.)
							Maximum O.C. Spacing (IN.)	Minimum Embedment (IN.)	Minimum Edge Distance (IN.)	Maximum O.C. Spacing (IN.)	Minimum Embedment (IN.)	Minimum Edge Distance (IN.)	Maximum O.C. Spacing (IN.)	Minimum Embedment (IN.)	Minimum Edge Distance (IN.)						
							24	24	24	24	24	24	24	24	24	24	24	24	24	24	24
2'-5"	N/R	N/R	344*	N/R	3/8	24	24	2 1/2	5 3/4	24	2 9/16	5 3/4	24	2 1/2	5 3/4	9/16"x3/4"	24	0	50	0	47
3'-5"	N/R	N/R	344*	N/R	3/8	24	24	2 1/2	5 3/4	24	2 9/16	5 3/4	24	2 1/2	5 3/4	9/16"x3/4"	24	0	70	0	67
4'-5"	N/R	N/R	344*	N/R	3/8	24	24	2 1/2	5 3/4	23	2 9/16	5 3/4	24	2 1/2	5 3/4	9/16"x3/4"	24	0	90	0	87
5'-5"	N/R	N/R	344*	N/R	3/8	24	24	2 1/2	5 3/4	19	2 9/16	5 3/4	22	2 1/2	5 3/4	9/16"x3/4"	24	0	110	0	107
6'-5"	N/R	N/R	344*	N/R	3/8	24	21	2 1/2	5 3/4	16	2 9/16	5 3/4	19	2 1/2	5 3/4	9/16"x3/4"	24	0	130	0	127
7'-5"	N/R	N/R	344*	N/R	3/8	24	18	2 1/2	5 3/4	14	2 9/16	5 3/4	16	2 1/2	5 3/4	9/16"x3/4"	24	0	150	0	147
8'-5"	N/R	N/R	344*	N/R	3/8	24	16	2 1/2	5 3/4	12	2 9/16	5 3/4	14	2 1/2	5 3/4	9/16"x3/4"	24	0	170	0	167
9'-5"	N/R	N/R	344*	N/R	3/8	24	14	2 1/2	5 3/4	11	2 9/16	5 3/4	13	2 1/2	5 3/4	9/16"x3/4"	24	0	190	0	187
10'-5"	N/R	N/R	344*	N/R	3/8	24	13	2 1/2	5 3/4	10	2 9/16	5 3/4	11	2 1/2	5 3/4	9/16"x3/4"	24	0	210	0	207
11'-5"	N/R	N/R	344*	N/R	3/8	24	12	2 1/2	5 3/4	9	2 9/16	5 3/4	10	2 1/2	5 3/4	9/16"x3/4"	24	0	230	0	227
12'-5"	1.5	CP0629	344	12	3/8	18	12	2 1/2	5 3/4	9	2 9/16	5 3/4	10	2 1/2	5 3/4	9/16"x3/4"	18	44	250	128	253
13'-5"	1.5	CP0629	344	12	3/8	18	18	2 1/2	5 3/4	14	2 9/16	5 3/4	12	2 1/2	5 3/4	9/16"x3/4"	18	300	270	364	273
14'-5"	1.5	CP0629	344	12	3/8	16	12	2 1/2	5 3/4	9	2 9/16	5 3/4	8	2 1/2	5 3/4	9/16"x3/4"	18	508	290	556	293
15'-5"	1.5	CP0629	344	12	3/8	13	10	2 1/2	5 3/4	7	2 9/16	5 3/4	7	2 1/2	5 3/4	9/16"x3/4"	18	673	310	710	313
16'-5"	1.5	CP0629	445	12	1/2	18	13	3 1/2	6 13/16	13	4 1/2	6 13/16	10	3 1/2	6 13/16	9/16"x3/4"	18	812	329	878	335
17'-5"	1.5	CP0629	445	12	1/2	18	11	3 1/2	6 13/16	12	4 1/2	6 13/16	9	3 1/2	6 13/16	9/16"x3/4"	18	927	349	980	355
18'-5"	1.5	CP0629	445	11	1/2	17	10	3 1/2	6 13/16	11	4 1/2	6 13/16	8	3 1/2	6 13/16	9/16"x3/4"	18	1021	369	1063	374
19'-5"	1.625	CP0630	445	11	1/2	15	9	3 1/2	6 13/16	10	4 1/2	6 13/16	7	3 1/2	6 13/16	9/16"x3/4"	17	1142	389	1175	394
20'-5"	1.75	CP0630	446	10	5/8	18	13	4	6 7/8	13	4 1/2	6 7/8	10	4	6 7/8	11/16"x7/8"	18	1220	409	1245	413
21'-5"	1.875	CP0630	446	10	5/8	18	12	4	6 7/8	12	4 1/2	6 7/8	9	4	6 7/8	11/16"x7/8"	17	1298	428	1318	433
22'-5"	2	CP0630	546	10	5/8	18	11	4	6 7/8	11	4 1/2	6 7/8	9	4	6 7/8	11/16"x7/8"	16	1376	448	1391	452
23'-5"	2	CP0630	546	9	5/8	18	10	4	6 7/8	10	4 1/2	6 7/8	8	4	6 7/8	11/16"x7/8"	14	1561	468	1575	472
24'-5"	2	CP0630	546	9	5/8	17	8	4	6 7/8	9	4 1/2	6 7/8	7	4	6 7/8	11/16"x7/8"	13	1743	488	1756	492
25'-5"	2.5	CP0630	548	9	3/4	18	14	4 3/4	7 1/2	13	5	7 1/2	12	5	7 1/2	13/16"x1"	18	1522	507	1528	510
26'-5"	2.5	CP0630	548	9	3/4	18	13	4 3/4	7 1/2	12	5	7 1/2	11	5	7 1/2	13/16"x1"	18	1676	527	1681	530
27'-5"	2.5	CP0630	548	9	3/4	18	12	4 3/4	7 1/2	11	5	7 1/2	10	5	7 1/2	13/16"x1"	18	1829	547	1833	550
28'-5"	2.5	CP0630	548	8	3/4	18	11	4 3/4	7 1/2	10	5	7 1/2	9	5	7 1/2	13/16"x1"	18	1980	567	1985	570
29'-5"	2.5	CP0630	648	8	3/4	18	10	4 3/4	7 1/2	10	5	7 1/2	N/A	N/A	N/A	13/16"x1"	17	2131	587	2135	590
30'-5"	2.5	CP0630 & CP0647	648	8	3/4	18	9	4 3/4	7 1/2	9	5	7 1/2	N/A	N/A	N/A	13/16"x1"	16	2281	607	2285	611
31'-5"	2.5	CP0630 & CP0647	648	7	3/4	17	8	4 3/4	7 1/2	8	5	7 1/2	N/A	N/A	N/A	13/16"x1"	15	2432	628	2436	631
32'-5"	2.5	CP0630 & CP0647	648	7	3/4	17	7	4 3/4	7 1/2	8	5	7 1/2	N/A	N/A	N/A	13/16"x1"	14	2582	648	2586	651
33'-5"	2.5	CP0630 & CP0647	648	7	3/4	16	6	4 3/4	7 1/2	7	5	7 1/2	N/A	N/A	N/A	13/16"x1"	13	2733	668	2737	671
34'-5"	2.5	CP0630 & CP0647	648	7	3/4	15	5	4 3/4	7 1/2	7	5	7 1/2	N/A	N/A	N/A	13/16"x1"	13	2885	688	2888	692
35'-5"	2.5	CP0630 & CP0647	648	7	3/4	14	5	4 3/4	7 1/2	7	5	7 1/2	N/A	N/A	N/A	13/16"x1"	13	3037	708	3040	712

- NOTES:
 1. N/R - not required
 2. * - non - windlock guide assembly
 3. N/A - not available



CORNELL 100 ELMWOOD AVENUE
 CRESTWOOD INDUSTRIAL PARK
 MOUNTAIN TOP, PA 18070

TITLE
**WINDLOAD CONFIGURATIONS,
 INSULATED ROLLING DOOR**

SIZE DRAWN DWG NO. REV
 D. R. MAGGIO ES16-23-01 B

SCALE 1:1 SHEET 18 OF 23

18/24 GA. GALVANIZED OR STAINLESS STEEL - 60 P.S.F.

TABLE 16 Distance Between Guides (D.B.G.) thru (FT. - IN.)	Windlock Flat Location on Inner Angle (IN.)	Windlock	Guide Assembly Type	Windlock Flat Weld Pitch Spacing (IN.)	Fastener Diameter (IN.)	Assembly Fastener SAE Gr. 8 Maximum O.C. Spacing (IN.)	Wall Fasteners - Concrete Structure Min 3,000 PSI									Wall Fasteners - Steel Structure Min 1/4" fillet weld entire slot perimeter or Gr. 8 bolt		Superimposed Loads POSITIVE (+)		Superimposed Loads NEGATIVE (-)								
							Hilti Kwik Bolt 3			Simpson Wedge-All			Powers Wedge-Bolt			Slot	Maximum O.C. Spacing (IN.)	Vx (LBS.)	Vy (LBS.)	Vx (LBS.)	Vy (LBS.)							
							Maximum O.C. Spacing (IN.)	Minimum Embedment (IN.)	Minimum Edge Distance (IN.)	Maximum O.C. Spacing (IN.)	Minimum Embedment (IN.)	Minimum Edge Distance (IN.)	Maximum O.C. Spacing (IN.)	Minimum Embedment (IN.)	Minimum Edge Distance (IN.)													
							2'-5"	3'-5"	4'-5"	5'-5"	6'-5"	7'-5"	8'-5"	9'-5"	10'-5"	11'-5"	12'-5"	13'-5"	14'-5"	15'-5"	16'-5"	17'-5"	18'-5"	19'-5"	20'-5"	21'-5"	22'-5"	23'-5"
N/R	N/R	N/R	344*	N/R	3/8	24	24	2 1/2	5 3/4	24	2 9/16	5 3/4	24	2 1/2	5 3/4	9/16" x 3/4"	24	0	62	0	58							
N/R	N/R	N/R	344*	N/R	3/8	24	24	2 1/2	5 3/4	24	2 9/16	5 3/4	24	2 1/2	5 3/4	9/16" x 3/4"	24	0	87	0	83							
N/R	N/R	N/R	344*	N/R	3/8	24	24	2 1/2	5 3/4	18	2 9/16	5 3/4	22	2 1/2	5 3/4	9/16" x 3/4"	24	0	112	0	108							
N/R	N/R	N/R	344*	N/R	3/8	24	20	2 1/2	5 3/4	15	2 9/16	5 3/4	18	2 1/2	5 3/4	9/16" x 3/4"	24	0	137	0	133							
N/R	N/R	N/R	344*	N/R	3/8	24	17	2 1/2	5 3/4	13	2 9/16	5 3/4	15	2 1/2	5 3/4	9/16" x 3/4"	24	0	162	0	158							
N/R	N/R	N/R	344*	N/R	3/8	24	15	2 1/2	5 3/4	11	2 9/16	5 3/4	13	2 1/2	5 3/4	9/16" x 3/4"	24	0	187	0	183							
N/R	N/R	N/R	344*	N/R	3/8	24	13	2 1/2	5 3/4	9	2 9/16	5 3/4	11	2 1/2	5 3/4	9/16" x 3/4"	24	0	212	0	208							
N/R	N/R	N/R	344*	N/R	3/8	24	12	2 1/2	5 3/4	8	2 9/16	5 3/4	10	2 1/2	5 3/4	9/16" x 3/4"	24	0	237	0	233							
N/R	N/R	N/R	344*	N/R	3/8	24	10	2 1/2	5 3/4	8	2 9/16	5 3/4	9	2 1/2	5 3/4	9/16" x 3/4"	24	0	262	0	258							
1.5	CP0629	344	12	3/8	18	15	2 1/2	5 3/4	11	2 9/16	5 3/4	11	2 1/2	5 3/4	9/16" x 3/4"	18	175	287	289	291								
1.5	CP0629	344	12	3/8	15	12	2 1/2	5 3/4	9	2 9/16	5 3/4	8	2 1/2	5 3/4	9/16" x 3/4"	18	496	312	581	317								
1.5	CP0629	445	12	1/2	18	13	3 1/2	6 13/16	14	4 1/2	6 13/16	10	3 1/2	6 13/16	9/16" x 3/4"	18	750	337	883	345								
1.5	CP0629	445	11	1/2	18	11	3 1/2	6 13/16	11	4 1/2	6 13/16	8	3 1/2	6 13/16	9/16" x 3/4"	18	950	362	1056	370								
1.5	CP0630	445	11	1/2	16	9	3 1/2	6 13/16	10	4 1/2	6 13/16	7	3 1/2	6 13/16	9/16" x 3/4"	18	1114	387	1196	395								
1.5	CP0630	446	10	5/8	18	12	4	6 7/8	12	4 1/2	6 7/8	10	4	6 7/8	11/16" x 7/8"	18	1247	412	1313	419								
1.5	CP0630	446	10	5/8	18	11	4	6 7/8	11	4 1/2	6 7/8	9	4	6 7/8	11/16" x 7/8"	17	1358	437	1410	444								
1.5	CP0630	546	9	5/8	18	10	4	6 7/8	10	4 1/2	6 7/8	8	4	6 7/8	11/16" x 7/8"	14	1567	462	1611	469								
1.625	CP0630	546	9	5/8	18	10	4	6 7/8	9	4 1/2	6 7/8	8	4	6 7/8	11/16" x 7/8"	14	1634	486	1669	493								
1.75	CP0630	546	9	5/8	17	9	4	6 7/8	9	4 1/2	6 7/8	7	4	6 7/8	11/16" x 7/8"	13	1710	511	1738	517								
1.875	CP0630	548	9	3/4	18	13	4 3/4	7 1/2	12	5	7 1/2	10	5	7 1/2	13/16" x 1"	18	1798	536	1822	542								
2	CP0630	548	8	3/4	18	12	4 3/4	7 1/2	11	5	7 1/2	10	5	7 1/2	13/16" x 1"	18	1880	561	1899	566								
2.125	CP0630	548	8	3/4	18	11	4 3/4	7 1/2	10	5	7 1/2	9	5	7 1/2	13/16" x 1"	18	1962	586	1977	591								
2.25	CP0630 & CP0647	548	8	3/4	18	11	4 3/4	7 1/2	10	5	7 1/2	9	5	7 1/2	13/16" x 1"	18	2044	610	2055	615								
2.5	CP0630 & CP0647	648	8	3/4	18	11	4 3/4	7 1/2	10	5	7 1/2	9	5	7 1/2	13/16" x 1"	18	2021	634	2027	638								
2.5	CP0630 & CP0647	648	8	3/4	18	9	4 3/4	7 1/2	9	5	7 1/2	N/A	N/A	N/A	13/16" x 1"	17	2205	659	2211	663								
2.5	CP0630 & CP0647	648	8	3/4	17	8	4 3/4	7 1/2	8	5	7 1/2	N/A	N/A	N/A	13/16" x 1"	15	2388	684	2393	688								
2.5	CP0630 & CP0647	648	7	3/4	16	7	4 3/4	7 1/2	8	5	7 1/2	N/A	N/A	N/A	13/16" x 1"	14	2570	709	2575	713								
2.5	CP0630 & CP0647	648	7	3/4	15	6	4 3/4	7 1/2	7	5	7 1/2	N/A	N/A	N/A	13/16" x 1"	13	2752	734	2757	739								
2.5	CP0630 & CP0647	648	7	3/4	14	5	4 3/4	7 1/2	7	5	7 1/2	N/A	N/A	N/A	13/16" x 1"	13	2934	760	2939	764								

- NOTES:
 1. N/R - not required
 2. * - non - windlock guide assembly
 3. N/A - not available

REV.	REVISION	DATE	BY	E.C.O.
1	ORIGINAL ISSUE	10/14/04	R.M.	-
2	REVISE WINDLOCK FLAT TO SHOW 1/2" AND REVISE POWERS SPACING	08/12/05	R.M.	1214
3	ADDED EMBEDMENT DEPTH AND EDGE DISTANCE FOR ANCHORS	11/25/05	R.M.	-



CORNELL 100 ELMWOOD AVENUE
 GREENWOOD INDUSTRIAL PARK
 MOUNTAINTOP, PA 18707

TITLE
**WINDLOCK CONFIGURATIONS,
 INSULATED ROLLING DOOR**

SIZE DRAWN DWG NO REV
 D. R. MAGGIO ES16-23-01 B

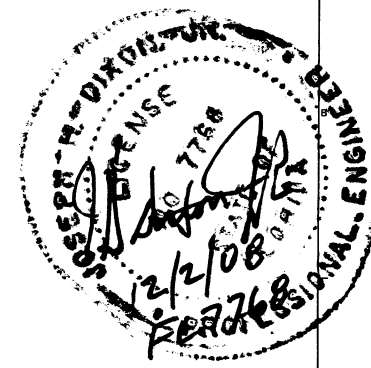
SCALE SHEET 19 OF 23

REV.	REVISION	DATE	BY	E.C.D.
1	ORIGINAL ISSUE	10/14/04	R.M.	-
2	REVISE MASONRY FAST TO BOLT AND REVERSE POWERS SPACING	09/13/05	R.M.	1214
3	ADDED EMBEDMENT DEPTH AND EDGE DISTANCE FOR ANCHORS	11/29/06	R.M.	-

18/24 GA. GALVANIZED OR STAINLESS STEEL - 60 P.S.F.																						
TABLE 17	Distance Between Guides (D.B.G.) thru (FT.-IN.)	Windlock Flat Location on Inner Angle (IN.)	Windlock	Guide Assembly Type	Windlock Flat Weld Pitch Spacing (IN.)	Fastener Diameter (IN.)	Assembly Fastener SAE Gr. 8 Maximum O.C. Spacing (IN.)	Wall Fasteners - Concrete Structure Min 3,000 PSI									Wall fasteners - Steel Structure Min 1/4" fillet weld entire slot perimeter or Gr. 8 bolt		Superimposed Loads POSITIVE (+)		Superimposed Loads NEGATIVE (-)	
								Hilti Kwik Bolt 3			Simpson Wedge-All			Powers Wedge-Bolt			Slot	Maximum O.C. Spacing (IN.)	Vx (LBS.)	Vy (LBS.)	Vx (LBS.)	Vy (LBS.)
								Maximum O.C. Spacing (IN.)	Minimum Embedment (IN.)	Minimum Edge Distance (IN.)	Maximum O.C. Spacing (IN.)	Minimum Embedment (IN.)	Minimum Edge Distance (IN.)	Maximum O.C. Spacing (IN.)	Minimum Embedment (IN.)	Minimum Edge Distance (IN.)						
								24	2 1/2	5 3/4	24	2 9/16	5 3/4	24	2 1/2	5 3/4						
2'-5"	N/R	N/R	344*	N/R	3/8	24	24	2 1/2	5 3/4	24	2 9/16	5 3/4	24	2 1/2	5 3/4	9/16"x3/4"	24	0	74	0	70	
3'-5"	N/R	N/R	344*	N/R	3/8	24	24	2 1/2	5 3/4	20	2 9/16	5 3/4	23	2 1/2	5 3/4	9/16"x3/4"	24	0	104	0	100	
4'-5"	N/R	N/R	344*	N/R	3/8	24	20	2 1/2	5 3/4	15	2 9/16	5 3/4	18	2 1/2	5 3/4	9/16"x3/4"	24	0	134	0	130	
5'-5"	N/R	N/R	344*	N/R	3/8	24	17	2 1/2	5 3/4	12	2 9/16	5 3/4	15	2 1/2	5 3/4	9/16"x3/4"	24	0	164	0	160	
6'-5"	N/R	N/R	344*	N/R	3/8	24	14	2 1/2	5 3/4	10	2 9/16	5 3/4	12	2 1/2	5 3/4	9/16"x3/4"	24	0	194	0	190	
7'-5"	N/R	N/R	344*	N/R	3/8	24	12	2 1/2	5 3/4	9	2 9/16	5 3/4	11	2 1/2	5 3/4	9/16"x3/4"	24	0	224	0	220	
8'-5"	N/R	N/R	344*	N/R	3/8	24	11	2 1/2	5 3/4	8	2 9/16	5 3/4	9	2 1/2	5 3/4	9/16"x3/4"	24	0	254	0	250	
9'-5"	N/R	N/R	344*	N/R	3/8	24	10	2 1/2	5 3/4	7	2 9/16	5 3/4	8	2 1/2	5 3/4	9/16"x3/4"	24	0	284	0	280	
10'-5"	1.5	CP0629	344	12	3/8	18	14	2 1/2	5 3/4	10	2 9/16	5 3/4	10	2 1/2	5 3/4	9/16"x3/4"	18	199	314	354	320	
11'-5"	1.5	CP0629	344	12	3/8	13	10	2 1/2	5 3/4	7	2 9/16	5 3/4	7	2 1/2	5 3/4	9/16"x3/4"	18	565	345	679	350	
12'-5" DC	1.313	CP0629	344	12	1/2	18	14 1/2	3 1/2	5 3/4	13	3 3/8	5 3/4	N/A	N/A	N/A	9/16"x3/4"	18	612	377	647	381	
13'-5"	1.5	CP0630	446	10	5/8	18	12	4	6 7/8	13	4 1/2	6 7/8	10	4	6 7/8	11/16"x7/8"	18	1178	405	1310	415	
14'-5"	1.5	CP0630	446	10	5/8	18	11	4	6 7/8	11	4 1/2	6 7/8	9	4	6 7/8	11/16"x7/8"	16	1373	435	1478	444	
15'-5"	1.5	CP0630	546	9	5/8	18	10	4	6 7/8	10	4 1/2	6 7/8	8	4	6 7/8	11/16"x7/8"	15	1539	465	1622	474	
16'-5"	1.5	CP0630	546	9	5/8	17	8	4	6 7/8	9	4 1/2	6 7/8	7	4	6 7/8	11/16"x7/8"	13	1765	495	1834	504	
17'-5"	1.5	CP0630	548	8	3/4	18	12	4 3/4	7 1/2	11	5	7 1/2	9	5	7 1/2	13/16"x1"	18	1966	525	2028	535	
18'-5"	1.5	CP0630	548	8	3/4	18	11	4 3/4	7 1/2	10	5	7 1/2	9	5	7 1/2	13/16"x1"	17	2121	555	2173	565	
19'-5"	1.5	CP0630 & CP0647	648	7	3/4	18	8	4 3/4	7 1/2	9	5	7 1/2	10	5	7 1/2	13/16"x1"	15	2409	585	2456	595	
20'-5"	1.625	CP0630 & CP0647	648	7	3/4	18	8	4 3/4	7 1/2	9	5	7 1/2	N/A	N/A	N/A	13/16"x1"	15	2442	615	2480	624	
21'-5"	1.75	CP0630 & CP0647	648	7	3/4	18	7	4 3/4	7 1/2	8	5	7 1/2	N/A	N/A	N/A	13/16"x1"	15	2495	644	2525	653	
22'-5"	1.875	CP0630 & CP0647	648	7	3/4	17	7	4 3/4	7 1/2	8	5	7 1/2	N/A	N/A	N/A	13/16"x1"	14	2559	674	2584	682	
23'-5"	2	CP0630 & CP0647	648	7	3/4	17	6	4 3/4	7 1/2	7	5	7 1/2	N/A	N/A	N/A	13/16"x1"	14	2630	703	2650	711	
24'-5"	2.125	CP0630 & CP0647	648	7	3/4	16	6	4 3/4	7 1/2	8	5	7 1/2	N/A	N/A	N/A	13/16"x1"	14	2706	733	2722	739	
25'-5"	2.125	CP0630 & CP0647	648	7	3/4	15	6	4 3/4	7 1/2	7	5	7 1/2	N/A	N/A	N/A	13/16"x1"	12	2945	763	2960	770	
26'-5"	2.25	CP0630 & CP0647	648	7	3/4	14	5	4 3/4	7 1/2	7	5	7 1/2	N/A	N/A	N/A	13/16"x1"	12	3014	792	3025	799	
27'-5"	2.5	CP0630 & CP0647	648	7	3/4	14	5	4 3/4	7 1/2	7	5	7 1/2	N/A	N/A	N/A	13/16"x1"	12	2947	821	2952	826	

18/24 GA. GALVANIZED OR STAINLESS STEEL - 120 P.S.F.																						
TABLE 18	Distance Between Guides (D.B.G.) thru (FT.-IN.)	Windlock Flat Location on Inner Angle (IN.)	Windlock	Guide Assembly Type	Windlock Flat Weld Pitch Spacing (IN.)	Fastener Diameter (IN.)	Assembly Fastener SAE Gr. 8 Maximum O.C. Spacing (IN.)	Wall Fasteners - Concrete Structure Min 3,000 PSI									Wall fasteners - Steel Structure (See note 6)		Superimposed Loads POSITIVE (+)		Superimposed Loads NEGATIVE (-)	
								Hilti Kwik Bolt 3			Simpson Wedge-All			Powers Wedge-Bolt			Slot	Maximum O.C. Spacing (IN.)	Vx (LBS.)	Vy (LBS.)	Vx (LBS.)	Vy (LBS.)
								Maximum O.C. Spacing (IN.)	Minimum Embedment (IN.)	Minimum Edge Distance (IN.)	Maximum O.C. Spacing (IN.)	Minimum Embedment (IN.)	Minimum Edge Distance (IN.)	Maximum O.C. Spacing (IN.)	Minimum Embedment (IN.)	Minimum Edge Distance (IN.)						
								11	4 3/4	7 1/2	9 1/2	5	7 1/2	N/A	N/A	N/A						
14'-5" DC	1.5	CP0630 & CP0647	548	7	3/4	17	11	4 3/4	7 1/2	9 1/2	5	7 1/2	N/A	N/A	N/A	13/16"x1"	10	3223	871	3298	890	

- NOTES:
- DC - Dade County Construction
 - N/R - not required
 - * - non - windlock guide assembly
 - N/A - not available
 - 1/4" Fillet weld entire perimeter of slot and 4" long at toe of wall angle or SAE Grade 8 bolt.



CORNELL 100 ELMWOOD AVENUE
CRESTWOOD INDUSTRIAL PARK
MOUNTAINTOP, PA 18707

TITLE: WINDLOAD CONFIGURATIONS, INSULATED ROLLING DOOR

SIZE DRAWN DWG NO REV
D R. MAGGIO ES16-23-01 B

SCALE: 1:1 SHEET 20 OF 23

22/22 GA. GALVANIZED OR STAINLESS STEEL - 30 P.S.F.

TABLE 19	Distance Between Guides (D.B.G.) thru: (FT. - IN.)	Windlock Flat Location on Inner Angle (IN.)	Windlock	Guide Assembly Type	Windlock Flat Weld Pitch Spacing (IN.)	Fastener Diameter (IN.)	Assembly Fastener SAE Gr. 8 Maximum O.C. Spacing (IN.)	Wall Fasteners - Concrete Structure Min 3,000 PSI									Wall Fasteners - Steel Structure Min 1/4" fillet weld entire slot perimeter or Gr. 8 bolt		Superimposed Loads POSITIVE (+)		Superimposed Loads NEGATIVE (-)	
								HiTi Kwik Bolt 3			Simpson Wedge-All			Powers Wedge-Bolt			Slot	Maximum O.C. Spacing (IN.)	Vx (LBS.)	Vy (LBS.)	Vx (LBS.)	Vy (LBS.)
								Maximum O.C. Spacing (IN.)	Minimum Embedment (IN.)	Minimum Edge Distance (IN.)	Maximum O.C. Spacing (IN.)	Minimum Embedment (IN.)	Minimum Edge Distance (IN.)	Maximum O.C. Spacing (IN.)	Minimum Embedment (IN.)	Minimum Edge Distance (IN.)						
								24	24	2 1/2	5 3/4	24	2 9/16	5 3/4	24	2 1/2	5 3/4	24	2 1/2	5 3/4	9/16" x 3/4"	24
3'-5"	N/R	N/R	344*	N/R	3/8	24	24	2 1/2	5 3/4	24	2 9/16	5 3/4	24	2 1/2	5 3/4	9/16" x 3/4"	24	0	52	0	50	
4'-5"	N/R	N/R	344*	N/R	3/8	24	24	2 1/2	5 3/4	24	2 9/16	5 3/4	24	2 1/2	5 3/4	9/16" x 3/4"	24	0	67	0	65	
5'-5"	N/R	N/R	344*	N/R	3/8	24	24	2 1/2	5 3/4	24	2 9/16	5 3/4	24	2 1/2	5 3/4	9/16" x 3/4"	24	0	82	0	80	
6'-5"	N/R	N/R	344*	N/R	3/8	24	24	2 1/2	5 3/4	21	2 9/16	5 3/4	24	2 1/2	5 3/4	9/16" x 3/4"	24	0	97	0	95	
7'-5"	N/R	N/R	344*	N/R	3/8	24	24	2 1/2	5 3/4	18	2 9/16	5 3/4	21	2 1/2	5 3/4	9/16" x 3/4"	24	0	112	0	110	
8'-5"	N/R	N/R	344*	N/R	3/8	24	21	2 1/2	5 3/4	16	2 9/16	5 3/4	19	2 1/2	5 3/4	9/16" x 3/4"	24	0	127	0	125	
9'-5"	N/R	N/R	344*	N/R	3/8	24	19	2 1/2	5 3/4	14	2 9/16	5 3/4	17	2 1/2	5 3/4	9/16" x 3/4"	24	0	142	0	140	
10'-5"	N/R	N/R	344*	N/R	3/8	24	17	2 1/2	5 3/4	13	2 9/16	5 3/4	15	2 1/2	5 3/4	9/16" x 3/4"	24	0	157	0	155	
11'-5"	N/R	N/R	344*	N/R	3/8	24	16	2 1/2	5 3/4	12	2 9/16	5 3/4	14	2 1/2	5 3/4	9/16" x 3/4"	24	0	172	0	170	
12'-5"	N/R	N/R	344*	N/R	3/8	24	15	2 1/2	5 3/4	11	2 9/16	5 3/4	13	2 1/2	5 3/4	9/16" x 3/4"	24	0	187	0	185	
13'-5"	N/R	N/R	344*	N/R	3/8	24	14	2 1/2	5 3/4	10	2 9/16	5 3/4	12	2 1/2	5 3/4	9/16" x 3/4"	24	0	202	0	200	
14'-5"	1.5	CP0629	344	12	3/8	18	18	2 1/2	5 3/4	18	2 9/16	5 3/4	18	2 1/2	5 3/4	9/16" x 3/4"	18	213	217	241	219	
15'-5"	1.5	CP0629	344	12	3/8	18	17	2 1/2	5 3/4	13	2 9/16	5 3/4	12	2 1/2	5 3/4	9/16" x 3/4"	18	373	232	394	234	
16'-5"	1.5	CP0629	344	12	3/8	17	13	2 1/2	5 3/4	10	2 9/16	5 3/4	9	2 1/2	5 3/4	9/16" x 3/4"	18	506	247	521	249	
17'-5"	1.5	CP0629	344	12	3/8	14	11	2 1/2	5 3/4	8	2 9/16	5 3/4	8	2 1/2	5 3/4	9/16" x 3/4"	18	617	262	628	264	
18'-5"	1.5	CP0629	445	12	1/2	18	14	3 1/2	6 13/16	14	4 1/2	6 13/16	10	3 1/2	6 13/16	9/16" x 3/4"	18	780	277	809	281	
19'-5"	1.625	CP0629	445	12	1/2	18	13	3 1/2	6 13/16	13	4 1/2	6 13/16	10	3 1/2	6 13/16	9/16" x 3/4"	18	840	291	863	295	
20'-5"	1.75	CP0629	445	12	1/2	18	12	3 1/2	6 13/16	13	4 1/2	6 13/16	9	3 1/2	6 13/16	9/16" x 3/4"	18	902	306	920	310	
21'-5"	1.875	CP0629	445	12	1/2	18	11	3 1/2	6 13/16	12	4 1/2	6 13/16	9	3 1/2	6 13/16	9/16" x 3/4"	18	962	321	977	324	
22'-5"	2	CP0629	445	12	1/2	17	11	3 1/2	6 13/16	11	4 1/2	6 13/16	8	3 1/2	6 13/16	9/16" x 3/4"	18	1022	336	1033	339	
23'-5"	2	CP0629	445	11	1/2	15	9	3 1/2	6 13/16	10	4 1/2	6 13/16	7	3 1/2	6 13/16	9/16" x 3/4"	17	1156	351	1166	354	
24'-5"	2	CP0630	446	10	5/8	18	12	4	6 7/8	12	4 1/2	6 7/8	9	4	6 7/8	11/16" x 7/8"	17	1333	366	1342	369	
25'-5"	2	CP0630	546	10	5/8	18	11	4	6 7/8	11	4 1/2	6 7/8	9	4	6 7/8	11/16" x 7/8"	15	1466	381	1475	384	
26'-5"	2	CP0630	546	9	5/8	18	10	4	6 7/8	10	4 1/2	6 7/8	8	4	6 7/8	11/16" x 7/8"	14	1597	396	1606	400	
27'-5"	2	CP0630	546	9	5/8	18	9	4	6 7/8	9	4 1/2	6 7/8	7	4	6 7/8	11/16" x 7/8"	13	1728	411	1736	415	
28'-5"	2.5	CP0630	548	10	3/4	18	15	4 3/4	7 1/2	14	5	7 1/2	12	5	7 1/2	13/16" x 1"	18	1504	425	1507	428	
29'-5"	2.5	CP0630	548	9	3/4	18	14	4 3/4	7 1/2	13	5	7 1/2	11	5	7 1/2	13/16" x 1"	18	1616	440	1619	443	
30'-5"	2.5	CP0630	548	9	3/4	18	13	4 3/4	7 1/2	12	5	7 1/2	11	5	7 1/2	13/16" x 1"	18	1727	455	1730	458	
31'-5"	2.5	CP0630 & CP0647	548	9	3/4	18	12	4 3/4	7 1/2	11	5	7 1/2	10	5	7 1/2	13/16" x 1"	18	1839	471	1842	473	
32'-5"	2.5	CP0630 & CP0647	648	8	3/4	18	12	4 3/4	7 1/2	11	5	7 1/2	9	5	7 1/2	13/16" x 1"	18	1951	486	1954	488	
33'-5"	2.5	CP0630 & CP0647	648	8	3/4	18	11	4 3/4	7 1/2	10	5	7 1/2	9	5	7 1/2	13/16" x 1"	18	2063	501	2066	503	
34'-5"	2.5	CP0630 & CP0647	648	8	3/4	18	10	4 3/4	7 1/2	10	5	7 1/2	N/A	N/A	N/A	13/16" x 1"	17	2176	516	2179	519	
35'-5"	2.5	CP0630 & CP0647	648	8	3/4	18	9	4 3/4	7 1/2	9	5	7 1/2	N/A	N/A	N/A	13/16" x 1"	16	2290	531	2292	534	
36'-5"	2.5	CP0630 & CP0647	648	8	3/4	18	8	4 3/4	7 1/2	9	5	7 1/2	N/A	N/A	N/A	13/16" x 1"	15	2404	546	2406	549	
37'-5"	2.5	CP0630 & CP0647	648	7	3/4	17	7	4 3/4	7 1/2	8	5	7 1/2	N/A	N/A	N/A	13/16" x 1"	15	2519	562	2521	564	
38'-5"	2.5	CP0630 & CP0647	648	7	3/4	17	7	4 3/4	7 1/2	8	5	7 1/2	N/A	N/A	N/A	13/16" x 1"	14	2634	577	2637	580	

NOTES:
 1. N/R - not required
 2. * - non - windlock guide assembly
 3. N/A - not available

LTR	REVISION	DATE	BY	E.C.O.
-	ORIGINAL ISSUE	10/14/04	R.M.	-
A	REVISE WINDFAST TO INCLUDE BOLT 3 AND REVISE POWERS SPACING	09/12/05	R.M.	1214
B	ADDED EMBEDMENT DEPTH AND EDGE DISTANCE FOR ANCHORS	11/25/08	R.M.	-



CORNELL 100 ELMWOOD AVENUE
 CRESTWOOD INDUSTRIAL PARK
 MOUNTAIN TOP, PA 18070

TITLE: WINDLOAD CONFIGURATIONS, INSULATED ROLLING DOOR

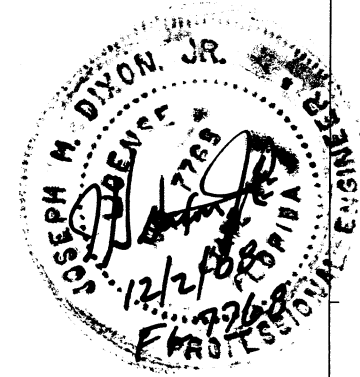
SIZE DRAWN: DWG NO: REV: B
 D. R. MAGGIO ES16-23-01

SCALE: 1:1 SHEET: 21 OF 23

REV	REVISION	DATE	BY	E.C.O.
1	ORIGINAL ISSUE	10/14/01	R.M.	-
2	REVISE MASONRY FAST. TO USE BOLT & NUT REVISE POWERS SPACING	06/12/05	R.M.	1214
3	ADDED EMBEDMENT DEPTH AND EDGE DISTANCE FOR ANCHORS	11/29/08	R.M.	-

22/22 GA. GALVANIZED OR STAINLESS STEEL - 40 P.S.F.																					
Distance Between Guides (D.B.G.) thru (FT.-IN.)	Windlock Flat Location on Inner Angle (IN.)	Windlock	Guide Assembly Type	Windlock Flat Weld Pitch Spacing (IN.)	Fastener Diameter (IN.)	Assembly Fastener SAE Gr. 8 Maximum O.C. Spacing (IN.)	Wall Fasteners - Concrete Structure Min 3,000 PSI									Wall fasteners - Steel Structure Min 1/4" fillet weld entire slot perimeter or Gr. 8 bolt		Superimposed Loads POSITIVE (+)		Superimposed Loads NEGATIVE (-)	
							Hilti Kwik Bolt 3			Simpson Wedge-All			Powers Wedge-Bolt			Slot	Maximum O.C. Spacing (IN.)	Vx (LBS.)	Vy (LBS.)	Vx (LBS.)	Vy (LBS.)
							Maximum O.C. Spacing (IN.)	Minimum Embedment (IN.)	Minimum Edge Distance (IN.)	Maximum O.C. Spacing (IN.)	Minimum Embedment (IN.)	Minimum Edge Distance (IN.)	Maximum O.C. Spacing (IN.)	Minimum Embedment (IN.)	Minimum Edge Distance (IN.)						
2'-5"	N/R	N/R	344*	N/R	3/8	24	24	2 1/2	5 3/4	24	2 9/16	5 3/4	24	2 1/2	5 3/4	9/16"x3/4"	24	0	50	0	48
3'-5"	N/R	N/R	344*	N/R	3/8	24	24	2 1/2	5 3/4	24	2 9/16	5 3/4	24	2 1/2	5 3/4	9/16"x3/4"	24	0	70	0	67
4'-5"	N/R	N/R	344*	N/R	3/8	24	24	2 1/2	5 3/4	23	2 9/16	5 3/4	24	2 1/2	5 3/4	9/16"x3/4"	24	0	90	0	87
5'-5"	N/R	N/R	344*	N/R	3/8	24	24	2 1/2	5 3/4	19	2 9/16	5 3/4	22	2 1/2	5 3/4	9/16"x3/4"	24	0	110	0	107
6'-5"	N/R	N/R	344*	N/R	3/8	24	21	2 1/2	5 3/4	16	2 9/16	5 3/4	19	2 1/2	5 3/4	9/16"x3/4"	24	0	130	0	127
7'-5"	N/R	N/R	344*	N/R	3/8	24	18	2 1/2	5 3/4	14	2 9/16	5 3/4	16	2 1/2	5 3/4	9/16"x3/4"	24	0	150	0	147
8'-5"	N/R	N/R	344*	N/R	3/8	24	16	2 1/2	5 3/4	12	2 9/16	5 3/4	14	2 1/2	5 3/4	9/16"x3/4"	24	0	170	0	167
9'-5"	N/R	N/R	344*	N/R	3/8	24	14	2 1/2	5 3/4	11	2 9/16	5 3/4	13	2 1/2	5 3/4	9/16"x3/4"	24	0	190	0	187
10'-5"	N/R	N/R	344*	N/R	3/8	24	13	2 1/2	5 3/4	10	2 9/16	5 3/4	11	2 1/2	5 3/4	9/16"x3/4"	24	0	210	0	207
11'-5"	N/R	N/R	344*	N/R	3/8	24	12	2 1/2	5 3/4	9	2 9/16	5 3/4	10	2 1/2	5 3/4	9/16"x3/4"	24	0	230	0	227
12'-5"	1.5	CP0629	344	12	3/8	18	18	2 1/2	5 3/4	15	2 9/16	5 3/4	13	2 1/2	5 3/4	9/16"x3/4"	18	288	250	343	253
13'-5"	1.5	CP0629	344	12	3/8	16	12	2 1/2	5 3/4	9	2 9/16	5 3/4	8	2 1/2	5 3/4	9/16"x3/4"	18	557	270	600	273
14'-5"	1.5	CP0629	445	12	1/2	18	13	3 1/2	6 13/16	14	4 1/2	6 13/16	10	3 1/2	6 13/16	9/16"x3/4"	18	763	289	835	296
15'-5"	1.5	CP0629	445	12	1/2	18	11	3 1/2	6 13/16	12	4 1/2	6 13/16	9	3 1/2	6 13/16	9/16"x3/4"	18	946	309	1005	316
16'-5"	1.5	CP0629	445	11	1/2	17	10	3 1/2	6 13/16	10	4 1/2	6 13/16	8	3 1/2	6 13/16	9/16"x3/4"	18	1102	329	1151	336
17'-5"	1.5	CP0630	446	10	5/8	18	13	4	6 7/8	13	4 1/2	6 7/8	10	4	6 7/8	11/16"x7/8"	18	1234	349	1272	355
18'-5"	1.5	CP0630	446	10	5/8	18	12	4	6 7/8	12	4 1/2	6 7/8	9	4	6 7/8	11/16"x7/8"	17	1345	369	1377	375
19'-5"	1.5	CP0630	546	9	5/8	18	10	4	6 7/8	10	4 1/2	6 7/8	8	4	6 7/8	11/16"x7/8"	14	1572	390	1601	396
20'-5"	1.625	CP0630	546	9	5/8	18	10	4	6 7/8	10	4 1/2	6 7/8	8	4	6 7/8	11/16"x7/8"	14	1597	409	1620	415
21'-5"	1.75	CP0630	546	9	5/8	18	10	4	6 7/8	10	4 1/2	6 7/8	8	4	6 7/8	11/16"x7/8"	14	1635	429	1653	434
22'-5"	1.875	CP0630	546	9	5/8	18	9	4	6 7/8	9	4 1/2	6 7/8	7	4	6 7/8	11/16"x7/8"	13	1680	449	1695	453
23'-5"	2	CP0630	546	9	5/8	17	9	4	6 7/8	9	4 1/2	6 7/8	7	4	6 7/8	11/16"x7/8"	13	1730	468	1741	473
24'-5"	2.125	CP0630	548	9	3/4	18	13	4 3/4	7 1/2	12	5	7 1/2	10	5	7 1/2	13/16"x1"	18	1787	488	1797	493
25'-5"	2.25	CP0630 & CP0647	548	9	3/4	18	12	4 3/4	7 1/2	11	5	7 1/2	10	5	7 1/2	13/16"x1"	18	1841	508	1849	512
26'-5"	2.375	CP0630 & CP0647	548	8	3/4	18	12	4 3/4	7 1/2	11	5	7 1/2	10	5	7 1/2	13/16"x1"	18	1895	528	1901	531
27'-5"	2.5	CP0630 & CP0647	548	8	3/4	18	12	4 3/4	7 1/2	10	5	7 1/2	9	5	7 1/2	13/16"x1"	18	1951	547	1955	550
28'-5"	2.5	CP0630 & CP0647	648	8	3/4	18	11	4 3/4	7 1/2	10	5	7 1/2	9	5	7 1/2	13/16"x1"	18	2094	567	2097	571
29'-5"	2.5	CP0630 & CP0647	648	8	3/4	18	9	4 3/4	7 1/2	9	5	7 1/2	N/A	N/A	N/A	13/16"x1"	16	2237	588	2240	591
30'-5"	2.5	CP0630 & CP0647	648	8	3/4	18	8	4 3/4	7 1/2	9	5	7 1/2	N/A	N/A	N/A	13/16"x1"	15	2380	608	2384	611
31'-5"	2.5	CP0630 & CP0647	648	7	3/4	17	7	4 3/4	7 1/2	8	5	7 1/2	N/A	N/A	N/A	13/16"x1"	15	2525	628	2528	631
32'-5"	2.5	CP0630 & CP0647	648	7	3/4	16	6	4 3/4	7 1/2	8	5	7 1/2	N/A	N/A	N/A	13/16"x1"	14	2669	648	2673	652
33'-5"	2.5	CP0630 & CP0647	648	7	3/4	15	6	4 3/4	7 1/2	7	5	7 1/2	N/A	N/A	N/A	13/16"x1"	13	2815	669	2819	672
34'-5"	2.5	CP0630 & CP0647	648	7	3/4	15	5	4 3/4	7 1/2	7	5	7 1/2	N/A	N/A	N/A	13/16"x1"	12	2965	689	2965	692
35'-5"	2.5	CP0630 & CP0647	648	7	3/4	14	5	4 3/4	7 1/2	7	5	7 1/2	N/A	N/A	N/A	13/16"x1"	12	3110	709	3113	713

NOTES:
1. N/R - not required
2. * - non - windlock guide assembly
3. N/A - not available



CORNELL 100 ELMWOOD AVENUE
CRESTWOOD INDUSTRIAL PARK
MOUNTAINTOP, PA 18707

TITLE
**WINDLOAD CONFIGURATIONS,
INSULATED ROLLING DOOR**

SIZE DRAWN DWG NO REV
D R. MAGGIO ES16-23-01 B
SCALE 1:1 SHEET 22 OF 23

